

NO. Z-0641

"AA" to "A"

Desc Northwest corner of Ridge Road and Denmark

BY Jimmie D. Kelley

DOA

BODY

ACTION

NOTICES

4-15-65

MAPC

Approved

5-4-65

Loc

Approved

Closed 5-5-65

File discarded 2-3-82

RESOLUTION NO.

239

PUBLISHED

5-8-65

T21-201

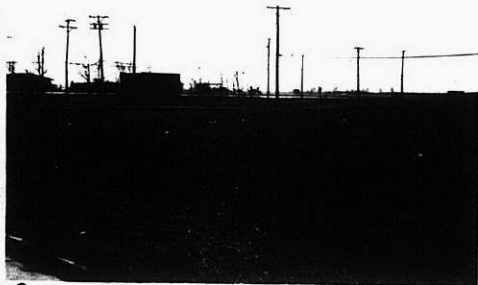
Z-0641

XTE

XTE



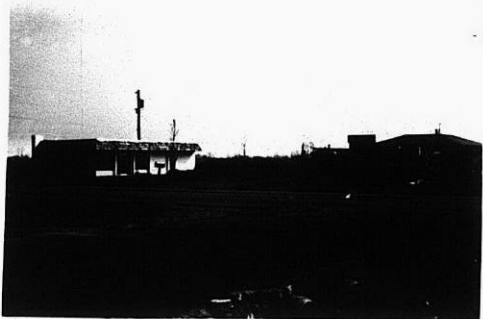
1.



2.



3.



4.



5.



6.

2-0641

319

34X