

NO. Z-0643 AA to LC

Desc On the north side of Central in an area between  
St. Paul and Mt. Carmel

BY B. U. Peters and Leonard G. Hope

DOA	BODY	ACTION	NOTICES
<u>4-15-65</u>	<u>MAPC</u>	<u>Approve</u>	
<u>5-4-65</u>	<u>See</u>	<u>Approved</u>	
	<u>Placed</u>	<u>5-5-65</u>	
<u>file discarded 2-3-82</u>			

RESOLUTION NO. 240 PUBLISHED 5-8-65  
T21-201

*Resolution 240*

Z-0643

311

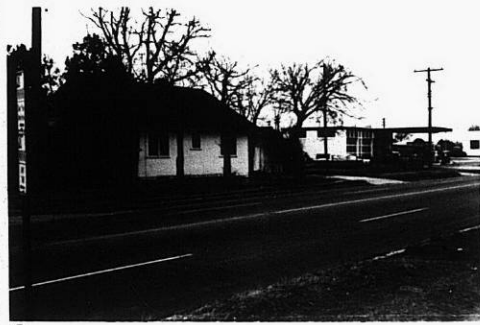
312



1



2



3

2-0643



4



5

2-0643



2-0643

2-0643

2-0643



6



7



8



9

34

34X