

NO. Z-0647

"AA" to "C"

Desc Southeast corner of Pawnee and St. Paul

BY Fred Ruth by Robert H. Nelson

DOA

BODY

ACTION

NOTICES

5-6-65

MAPC

Refer 2 weeks

5-20-65

Map

Approved subject to
plotting

10-5-65

Loc

Approved

Closed 10-6-65

File discarded 2-3-82

RESOLUTION NO. 285

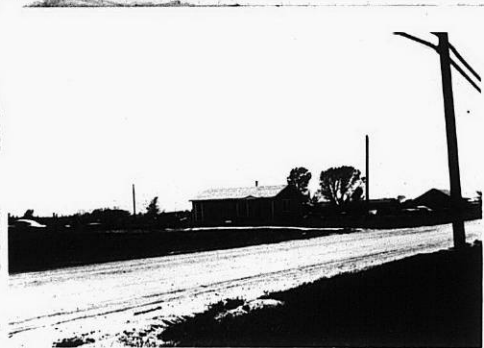
PUBLISHED 10-9-65

T21-201

Z-0647

175

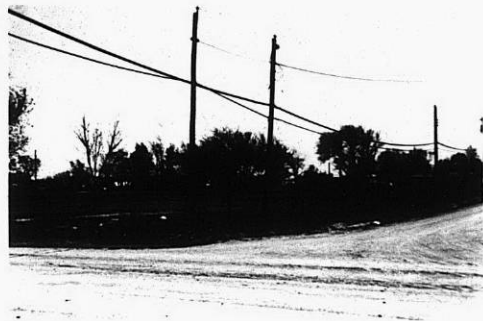
175



1.



2.



3.



4.



5.

2-0647

314

34X