

NO. Z-0658

"AA" to "LC"

Desc Northeast corner of Central and Murray

BY G. Gordon Dotzour

DOA

BODY

ACTION

NOTICES

5-20-65

MAPC

Deny "LC" - Approve "BB"

6-8-65

See

Approved "LC"

Closed 6-8-65

File discarded 2-3-82

RESOLUTION NO.

249

PUBLISHED

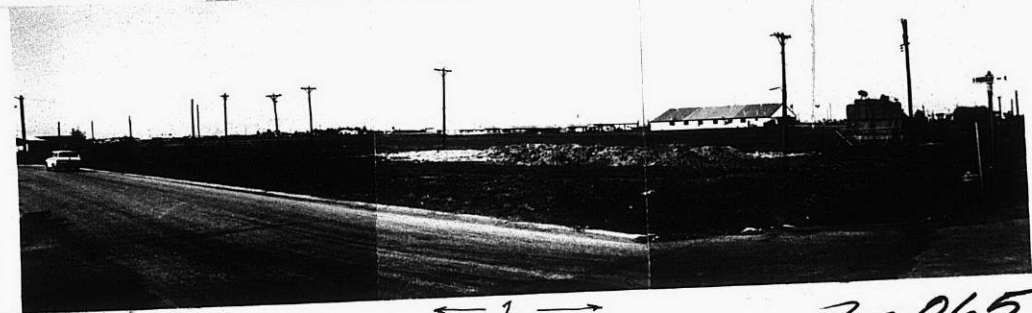
6-12-65

T21-201

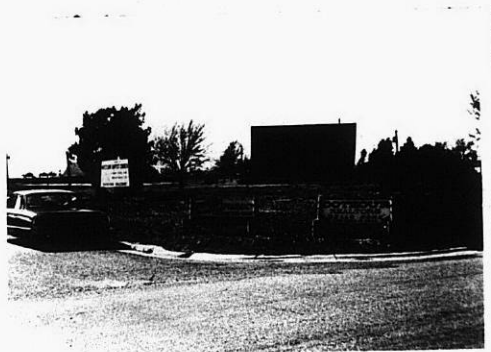
2-0658

311

311



2-0658



2.



3.



4.

XTE

XTE