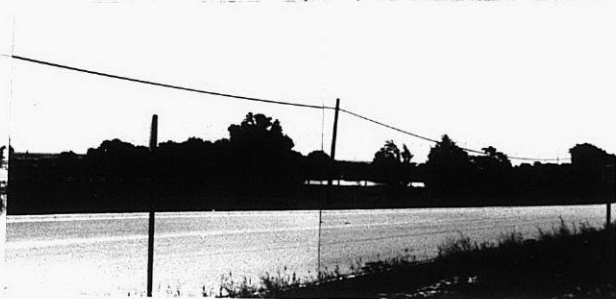


NO.	Z-0665		"LC" to "AA"
DESC	Northeast corner of 21st Street and Oliver		
BY	Planning Commission		
	DCA	BODY	ACTION
	6-17-65	MAPC	<i>Spny</i>
	7-6-65	<i>See</i>	<i>Denial</i>
	<i>Closed 7-7-65</i>		
	<i>File discarded 2-3-82</i>		
RESOLUTION NO.		PUBLISHED	
T 9-201			

Z-0665

314

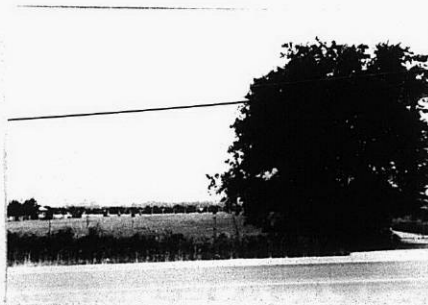
34X



1. ~~N~~E

2-0665

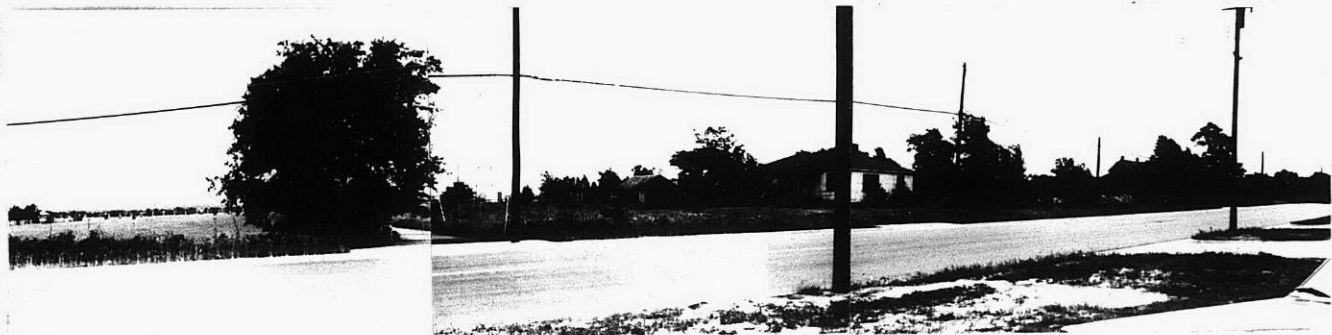
2.
~~S~~W



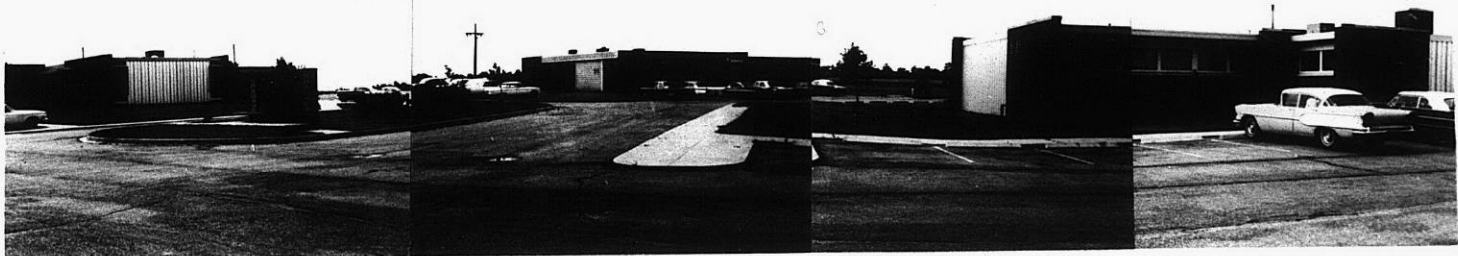
319

34X

2-0665



3. 7-E



4. $\begin{matrix} S \\ E+W \end{matrix}$

2-0665

319

XBE