

NO. Z-0674

"B" to "BB"

Desc East side of Hydraulic between Lewis and Kellogg

BY Will P. Ash and Francis E. Rector by Kent Frizzell

DOA

BODY

ACTION

NOTICES

7-15-65

MAPC

Approve - Dedicate 20'
row for N 50' and
10' for S 100'

~~8-15-65~~

~~MAPC~~

~~Advised that applicants~~

8-10-65

Map

Approved

Closed 8-11-65

File discarded 2-3-82

RESOLUTION NO. 269

PUBLISHED 8-14-65

T 9-201

Z-0674

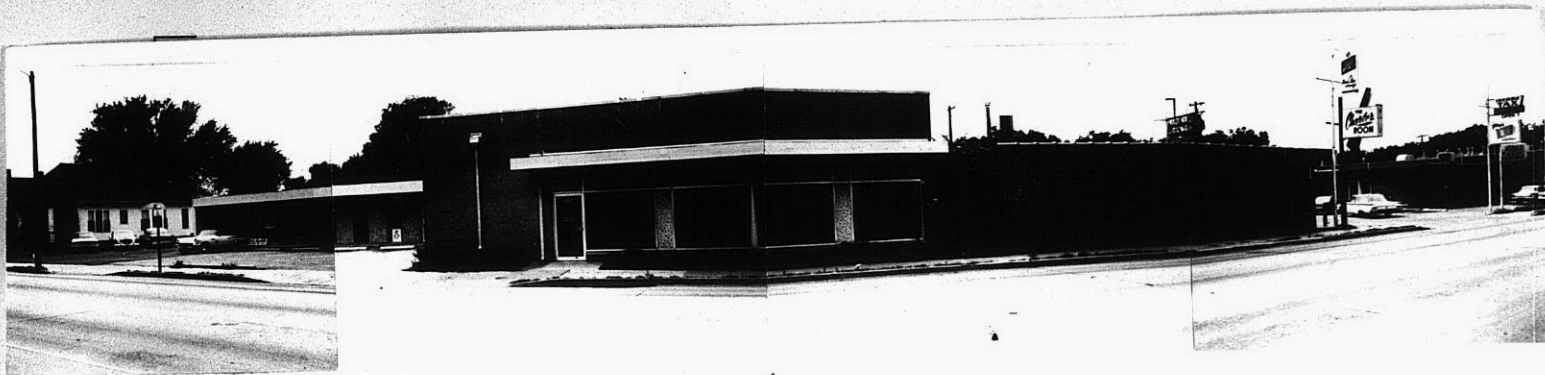
319

347

Z-0674

131

131



1.

2-0674



ZONE CASE AREA

2.

319

34X