

NO. 2-0675 "B" to "LC"

DESC West side of Seneca in an area south of May

BY McAbdeel, Inc. by Kent Frizzell  
DOA BODY ACTION NOTICES

7-15-65 MAPC Deferred 2 weeks

8-5-65 Map Approved - not forwarded  
until 8-31-65

8-31-65 Loc Approved "LC"

Closed 8-31-65

File discarded 2-3-82

RESOLUTION NO. 274 PUBLISHED Sept. 4, 1965  
T9-201

2-0675

319

347

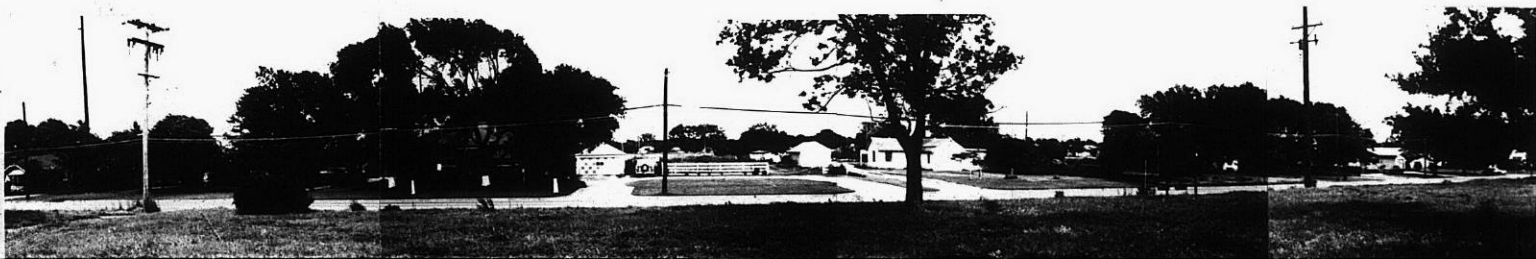


1.



2.

2-0675

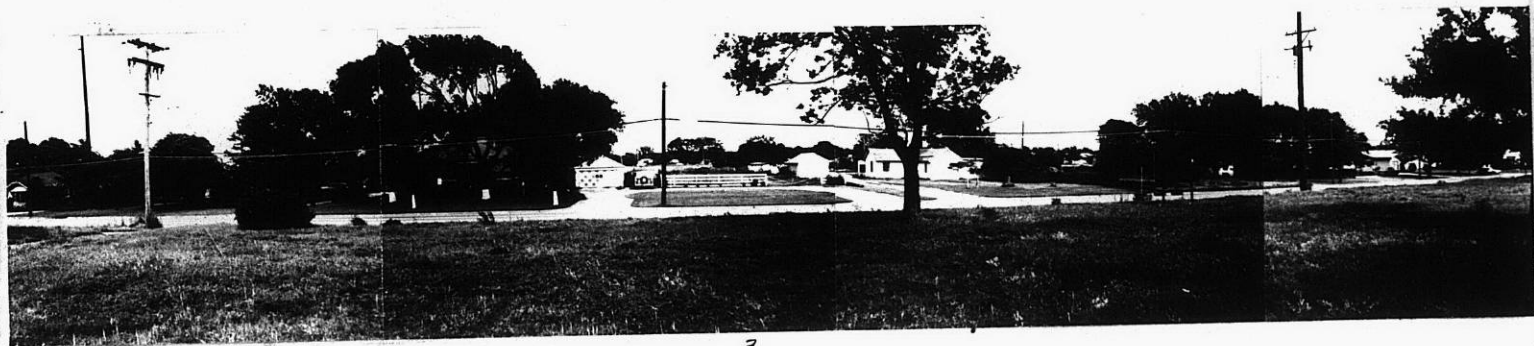


31

32

2.

2-0675



3.



4.

2-0675

KTE

KTE

NO. Z-0676

"B" & "AA" to "LC"

DESC Southeast corner of West Street and St. Louis

BY Chin Wee by Mason Arnold

DOA

BODY

ACTION

NOTICES

7-15-65

MAPC

*Approve subject to platting  
& indicating on the plat  
20' of row for West  
10' of row for St. Louis &  
25' Building setback.*

12-7-65

Sec

*Approved*

*Closed 12-7-65*

*file discarded*

*2-3-82*

RESOLUTION NO. 28-422

PUBLISHED

12-29-65

T 9-201

Z-0676

314

34X



1.



2

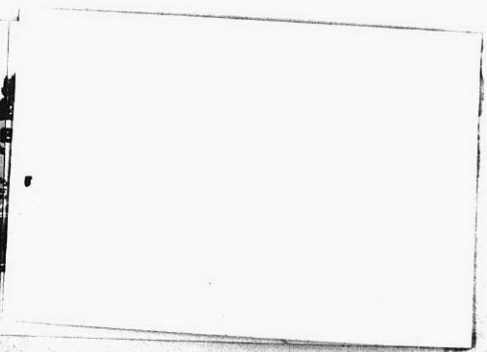


3

2-0676



4.



3E  
4E



2

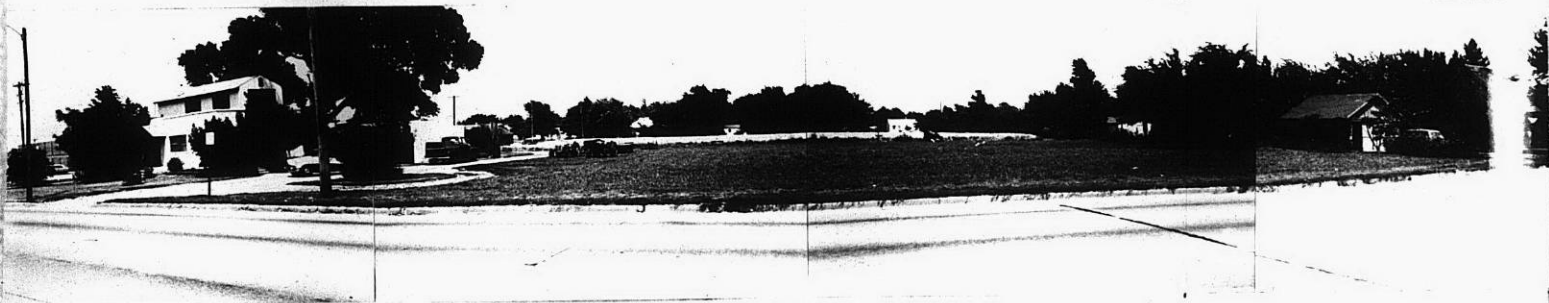


3

2-0676



4.



5.

2-0676

314

314

NO. Z-0678 AA to LC

Desc Southwest corner of Central and Tyler Road

BY M & B Investment Co., etal.

DCA BODY ACTION NOTICES

8-5-65 MAPC *Approve*

~~3-31-66~~ *3-31-66* *Rec* *Approved & withheld pub-*  
*lication until plot is recorded*

*Closed 3-31-66*

*file discarded 2-3-82*

*Ord*  
RESOLUTION NO. 28-640 PUBLISHED 1-23-66

T 9-201

Z-0678

311

311



1



2-0678



XFE

XFE

2-0678



3.



4.

2-0678

31

34x