

NO. Z-0702 B to LC

Desc Southeast corner of Kellogg and Fountain

BY Doris Youman by Madden, Scott & Towner & Char. Cline  
DOA BODY ACTION NOTICES

9-16-65 MAPC ~~Deny LC~~

<sup>13</sup>10-3-65 Deny Approve "LC"

Closed 10-12-65

File discarded 2-3-82

RESOLUTION NO. 286 PUBLISHED 11-2-65  
~~10-15-65~~

T9-201

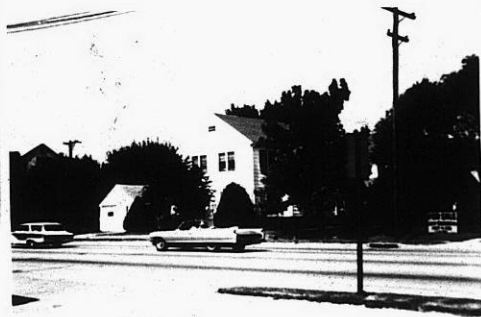
Z-0702

131

131



1.



2.



3.



4.



5.

2-0702

47E

47E