

No. Z-0730 "A" to "BB"

Desc. Northeast corner of Belmont and Kellogg

By: Layman L. Clark by Harry W. Saums

D.O.A. BODY ACTION

12-2-65 MAPC Approve subject to platting
indicating 20' setback from
Kellogg + 35' from Belmont

3-1-66 See Approved + withhold publica
tion till plat of Layman Clark till
closed 3-1-66 is recorded

File discarded 2-3-82

RESOLUTION No.: 28-580 PUBLISHED: 3-11-66

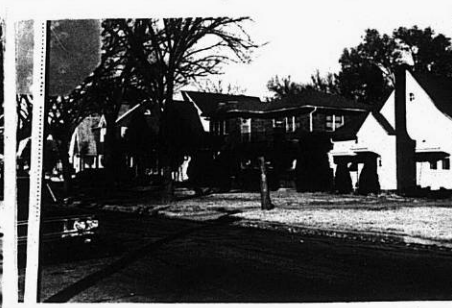
Z-0730

XTE

XTE



1.



2.



3.

Z-0730



319

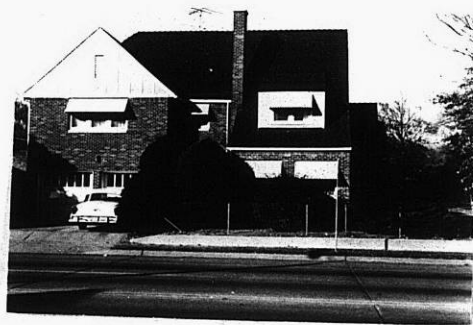
34x

3.

2-0730



4.



5.

2-0730



6.

4E

4E