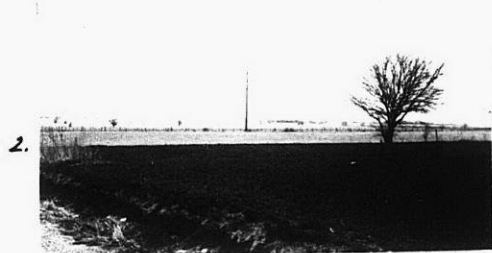


NO. Z-0776 "AA" to "LC"
Desc Southeast corner of Waterman and Greenwich Road
BY Howard L. & Naomi E. Soeken by Kent Frizzell
DOA BODY ACTION NOTICES
4-21-66 MAPC App. Lots 18, 19 & 20 for 'LC'
& Lot 17 for 'BB' subject
to platting
10-22-68 Rec. App. as recommended by MAPC
File discarded 2-3-82
RESOLUTION NO. 30-292 PUBLISHED 12-6-68
T9-201

Z-0776

311

34x



Z-0776



313

X13