

NO. Z-0782 "AA" to "A"

Desc On the north side of 21st Street in an area between Bullinger and Benjamin

BY Cardinal Construction Co., Inc. by V. V. Pinkham
DOA BODY ACTION NOTICES

5-19-66 MAPC Approve

6-7-66 Bcc Referred back to PC

7-7-66 Maps Approval motion failed

7-26-66 Bcc Recommend denial
Approved "A"

Closed 7-26-66

File discarded 2-3-82

RESOLUTION NO. 88-799 PUBLISHED 8-5-66

T 9-201

Z-0782

31E

34E



1.



2.



3.

Z-0782



4.



31

34X

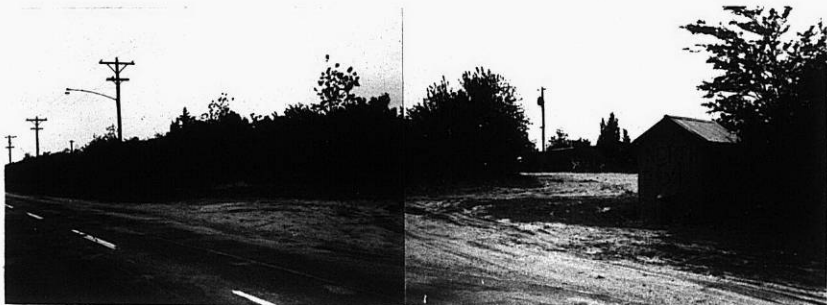
4.



5.



2-0782^{6.}



7.



8.

ATE

XTE