

NO. Z-0790

BB & LC to LC & BB

Desc Northeast corner of Dellrose and Douglas

BY J. G. Ripstra & Karl D. Solomon by <sup>Carl Bell Jr.</sup> Richard ~~...~~  
DOA BODY ACTION NOTICES

6-16-66 MAPC Deny

7-19-66 Sec Referred back to Maps

8-18-66 Maps No guarum

9-15-66 Maps Deny as amended

10-25-66 Sec Approved <sup>as amended</sup> Restrictive

Closed 10-26-66 covenants offered on  
Withdrawn month 150 feet  
by applicant

RESOLUTION NO. file discarded 2-3-82  
T 9-201 PUBLISHED

Z-0790

131

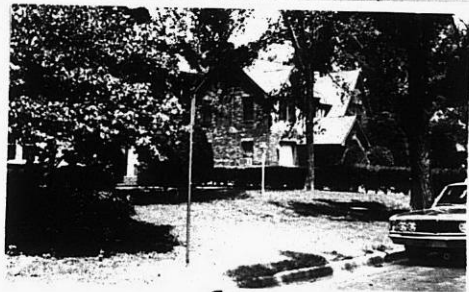
131



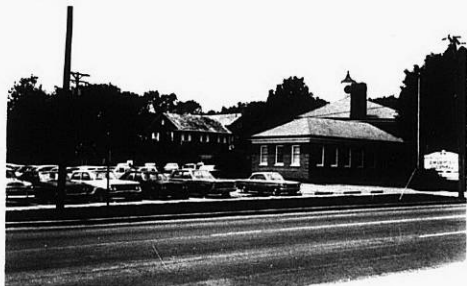
1.



2.



3.



4.



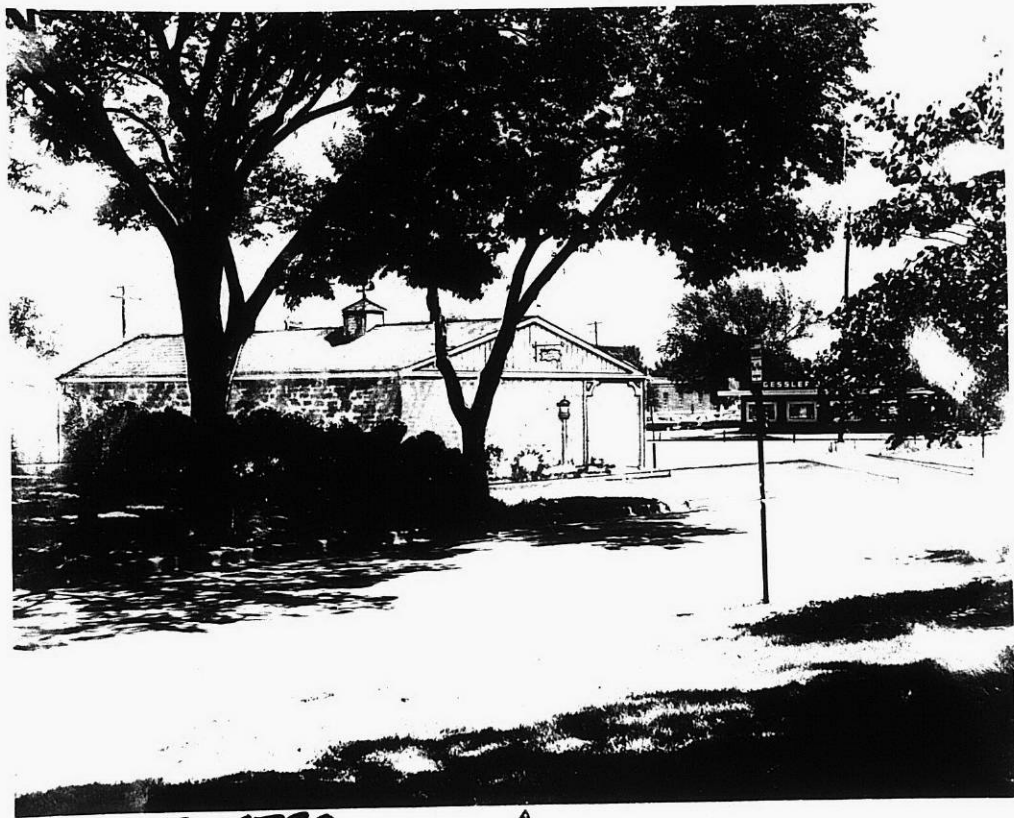
Z-0790



5.

319

XBE



2-0790

A

319

319

34X



Z-0790

A

12

12

12