

NO. Z-0807 "B" to "LC" ^{58%}

Desc On the east side of Oliver in an area between
Lincoln and Morris

BY Arthur R. Schmidt by Robert H. Nelson

DOA	BODY	ACTION	NOTICES
9-15-66	MAPC	<i>Deferred</i>	

10-6-66 Maps *Maps LC + App. BB*

10-25-66 Sec 1 *subject to platting*

Denied LC + Ordered BB

subject to platting & with

holding public until

plat is recorded

Closed 10-26-66

Superseded by Z-1141

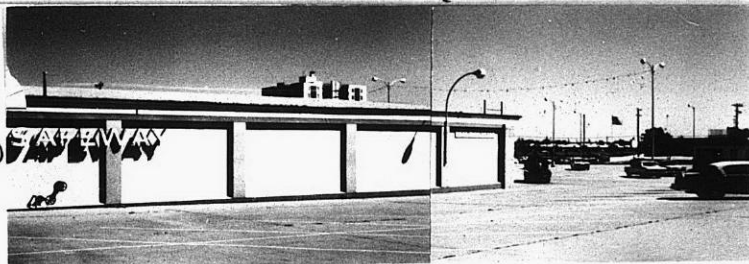
RESOLUTION NO. _____ PUBLISHED *file discarded 2-3-82*

T 9-201

Z-0807

121

34X



13E

14E