

NO. Z-0855 "AA" to "B"

DESC In an area bounded by Glen Oaks Drive, Hillside,
Timberlane and El Rancho Road

BY E. E. Kardatzke, et al., by Justus H. Fugate
DOA BODY ACTION NOTICES

3-9-67 MAPC Approve "B" subject to
flattening into one lot (Chuck
& Shamah Rd.)

But
7-12-73 MAPC Instructed Staff to Close

file discarded 2-5-82

RESOLUTION NO. _____ PUBLISHED _____
T 9-201

Z-0855

XTE
XTE

XTE

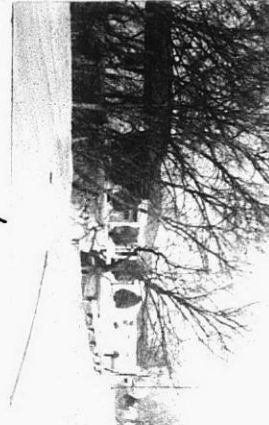
XTE



7



2



1



Z-0859 4



3



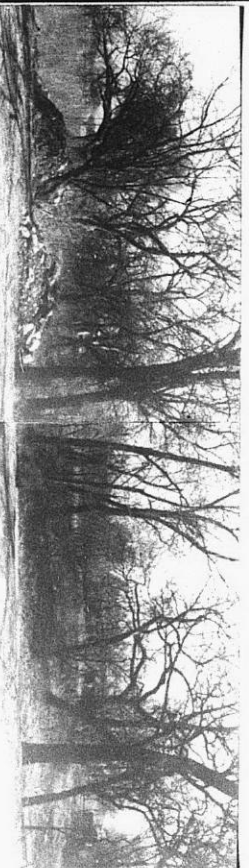
6



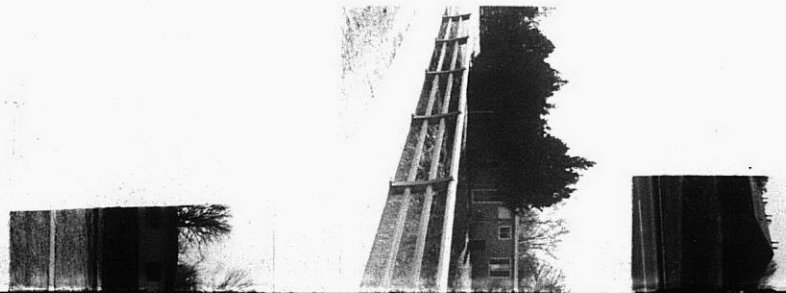
5



7



8





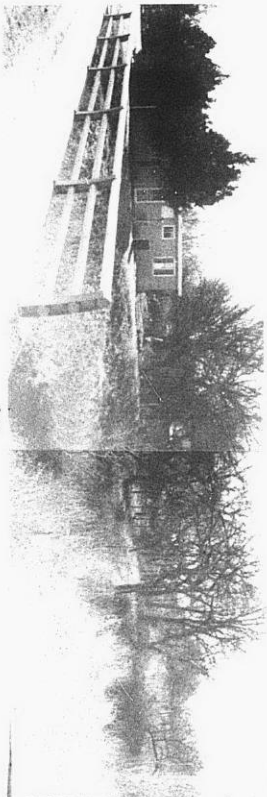
7



10



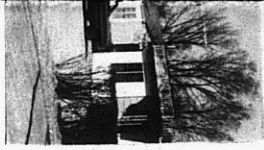
11



12



13



XTE

XTE