

NO. Z-0871 (amended to "C")  
 "E" to ~~map~~

Desc On the south side of MacArthur Road between  
I-235 & CRI&P Railroad

BY Don Schmid Motors, Inc., by Don C. Moehring  
 DOA BODY ACTION NOTICES

4-27-67 MAPC Deferred 4 weeks

5-25-67 Maps Directed staff to redue-  
tise for "C" zoning for N  
150' & (1) 10' of application

6-22-67 Maps Approved "C" as address  
& forward with plat & DR  
64-23 to Rec.

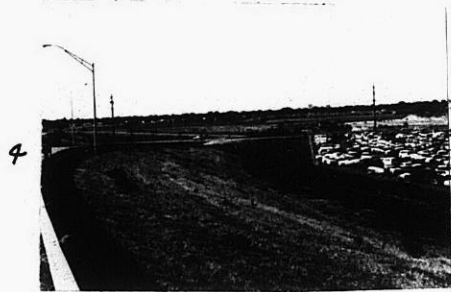
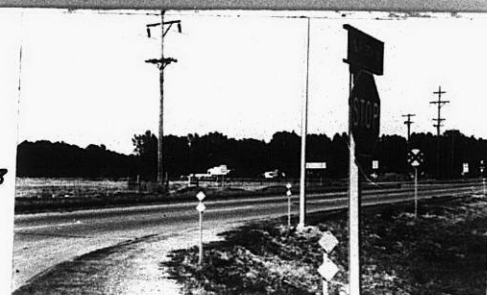
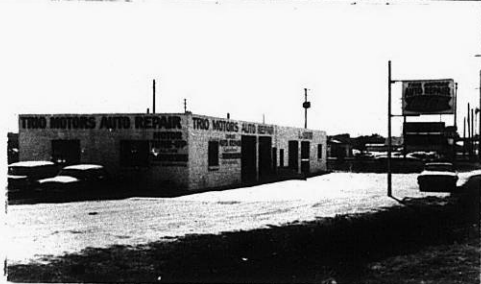
2-6-68 Rec. approved "C" subject to platting

RESOLUTION NO. 29-771 PUBLISHED March 6, 1968  
 T 9-201 file discarded 2-5-82

Z-0871

314

314



Z-0871

311

34X