

NO. Z-0914 "AA" to "G"

Desc On the south side of Navajo Lane between Clifton  
and Bluff

BY Elmer G. Womack by Don C. Moehring  
DOA BODY ACTION NOTICES

9-28-67 MAPC Approve 'B' subject to  
plotting Colonial Park and  
add

5-7-68 See approve

File discarded 2-5-82

RESOLUTION NO. 29-993 PUBLISHED July 17-62  
T 9-201

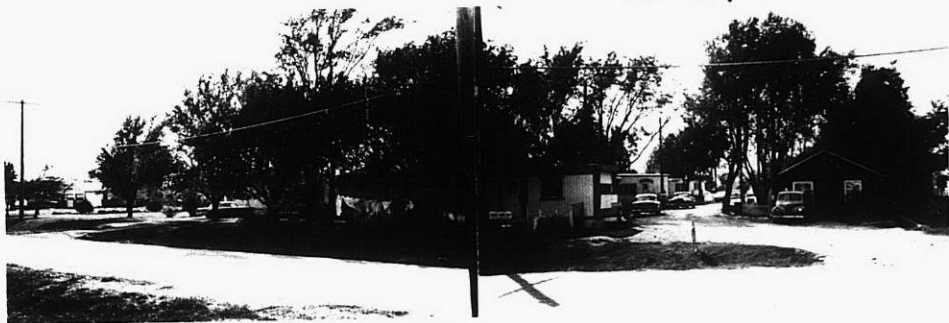
Z-0914

113

113

2-0914

1.



2.



3.



4.



5.

310

X4E



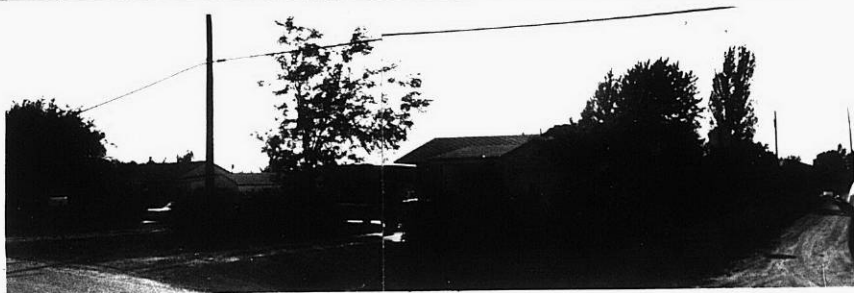
3.



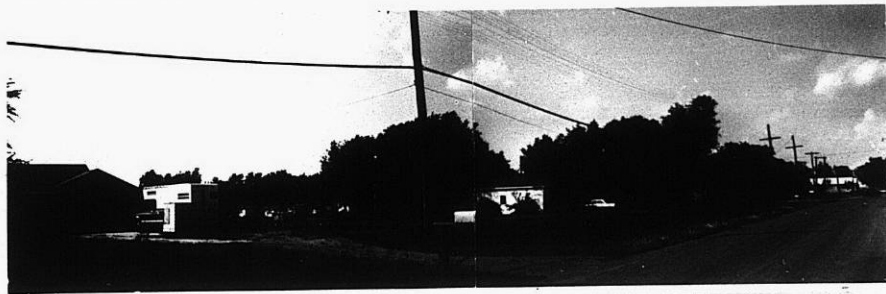
4.



5.



6.



7.

2-0914

313

34x