

NO. Z-0926 "AA" to "B"

Desc On the south side of 13th Street in an area between

13th Street Court and the Mo-Pac Railroad R/W  
Terrace Gardens Skilled Nursing Centers, Inc.,

BY et al., by Justus H. Fugate  
DOA BODY ACTION NOTICES

11-9-67 MAPC Aggravate "B" subject to platting  
(Hardatze Erd. Ord.)

4-16-68 Sec approved

File discarded 2-5-82

RESOLUTION NO. 29931a PUBLISHED 8-15-68  
T 9-201

Z-0926

311

311



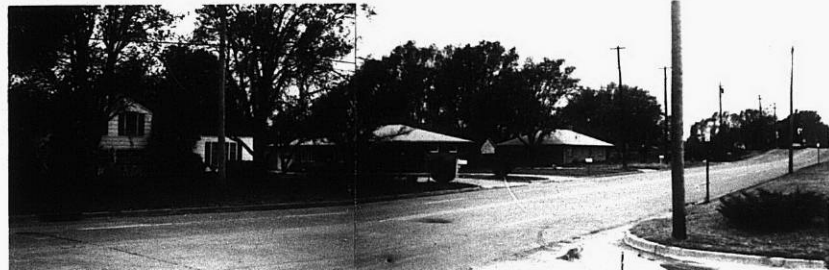
1.



2.



3.



4.



5.

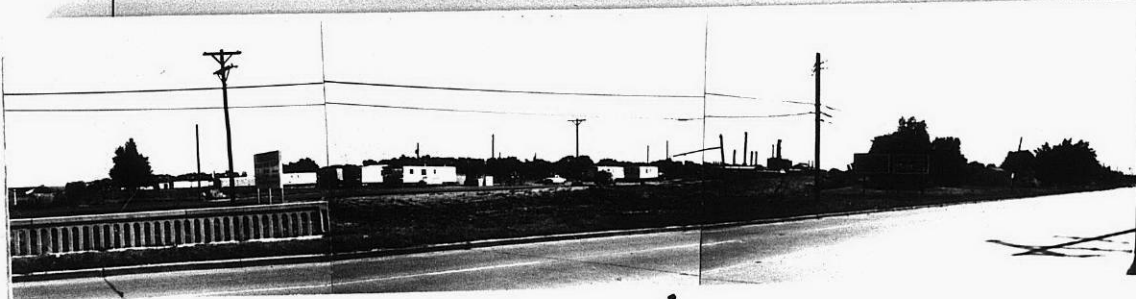


6.

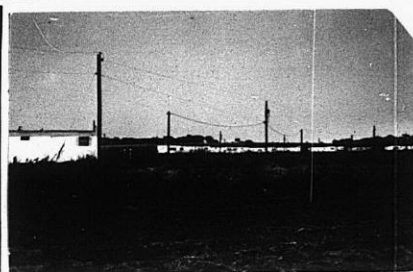
2-0926

STE

X 1/2



1.



2.



3.



4.

20926



5.



6.



7.

131

131