

NO. Z-0944 "AA" to "G"

Desc On the east side of Greenwich Road between Douglas
and Waterman

BY Almeron W. & Edith M. Stillwell, et al. by Bob Nelson

DOA	BODY	ACTION	NOTICES
<u>1-11-68</u>	<u>MAPC</u>	<u>Approved subject to platting</u>	
<u>1-30-68</u>	<u>BCC</u>	<u>Approved subject to platting</u>	
<u>file discarded 2-8-82</u>			
<u>Cloned 1/31/68</u>			

RESOLUTION NO. 29-736 PUBLISHED May 6, 1968

T 9-201

Z-0944
CU 101
4

319
347



1



2

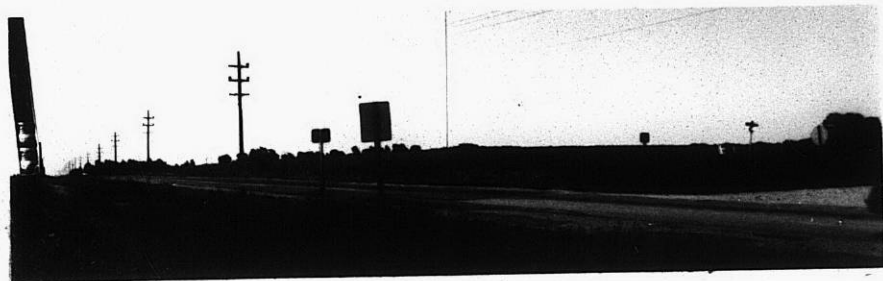


3

Z-0944



4



5



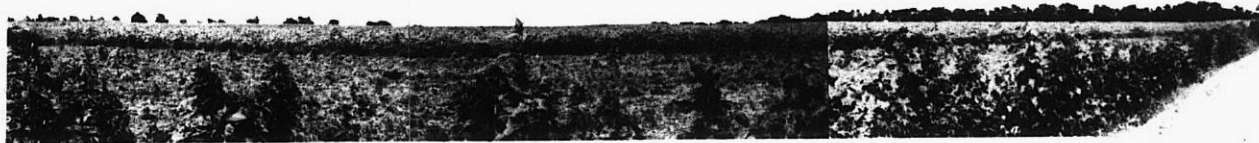
6

34x

4

5

6



7



Z-0944

9



10



319

319