

NO. Z-0970 AA to B
Desc South side of Maple between I-235 & Bebe Street
BY Modern Methods, Inc. by A. Price Gentry
DOA BODY ACTION NOTICES
3-28-68 MAPC Denied
4.23.68 Bec Referred back to mapc
to be reconsidered with GUP.
5.10.73 MAPC → Closed
File discarded 2-8-82
RESOLUTION NO. _____ PUBLISHED _____
T 9-201

Z-0970

XTE

XTE

NO. Z-0971

A to B

Desc Vicinity of interesection of Ash & 16th Street.

BY Thornton Clark, et al by G. Edmond Hayes

DOA

BODY

ACTION

NOTICES

3-28-68

MAPC

Amended by applicant & deferred

4-25-68

mapc

Approved

5-14-68

B.C.C.

approved

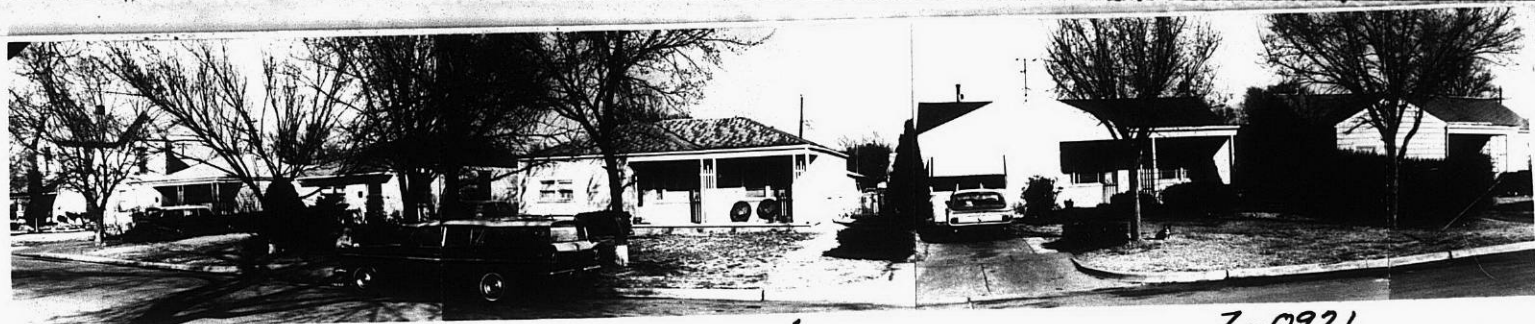
file discarded 2-8-82

RESOLUTION NO. 30-003 PUBLISHED 5-24-68
T9-201

Z-0971

311

34x



1.

Z-0971



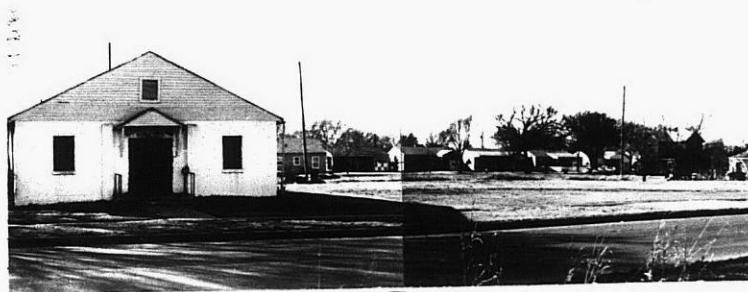
2.



3.



4.



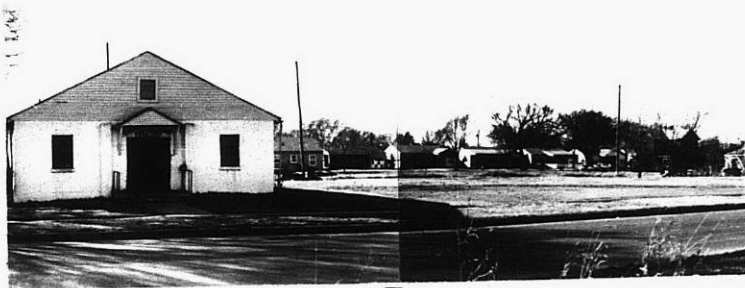
5.

ATE

XTE



4.



5.



Z-0971



ATE

X/E