

NO. Z-1005 "B" & "A" TO "BB"

Desc Between Poplar and Green in an area north of
Lincoln.

BY R. W. Womer
DOA BODY ACTION NOTICES

7-11-68 MAPC Refused

8-8-68 MAPC Approved

8-27-68 Boc Approved

File discarded 2-8-82

RESOLUTION NO. 30-221 PUBLISHED 9-5-68
T 9-201

Z-1005

311

34X

Z-1005

1.



2.



3.



Z-1005

4.



5.



6.



7.



35

34



100-114-041
sqvavs 2



2.



3.

Z-1005



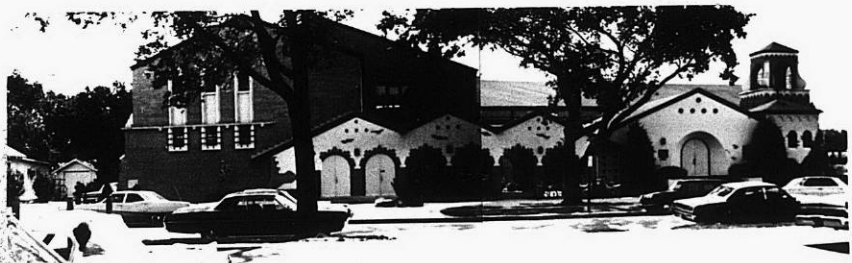
4.



5.



6.



7.

318

34X