

NO. Z-1021

"A" to "BB"

Desc Southeast corner of 13th St. and Estelle

*W. 1/2 lots 4, 6, 8 all 10, 12*

BY John E. Pyles

DOA

BODY

ACTION

NOTICES

8-22-68

MAPC

*Approved, subj to street ROW &  
sidewalk guarantee*

9-10-68

BCC

*Approved*

*file discarded 2-8-82*

RESOLUTION NO. 30-225 PUBLISHED 9-20-68  
T 9-201

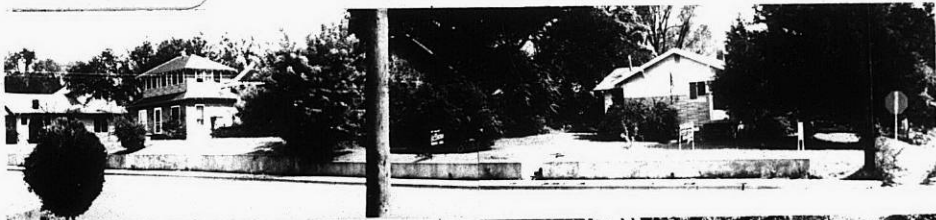
Z-1021

131

131

Z-1021

1.



2.



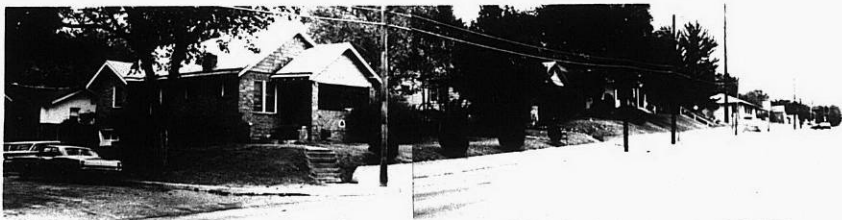
3.



4.



5.



1021  
1021