

NO. Z-1023 "AA" to "B" to "LC"

Desc East of West Street in an area south  
of Central.

BY Alfred A. Caro, et. al. by Sandlian Realty

DOA	BODY	ACTION	NOTICES
<u>9-12-68</u>	<u>MAPC</u>	<u>approved, subj to replat</u>	
<u>1-14-69</u>	<u>RCC</u>	<u>Approved</u>	

File discarded 2-8-82

RESOLUTION NO. 30-366 PUBLISHED 10-30-70  
 T 9-201

Z-1023

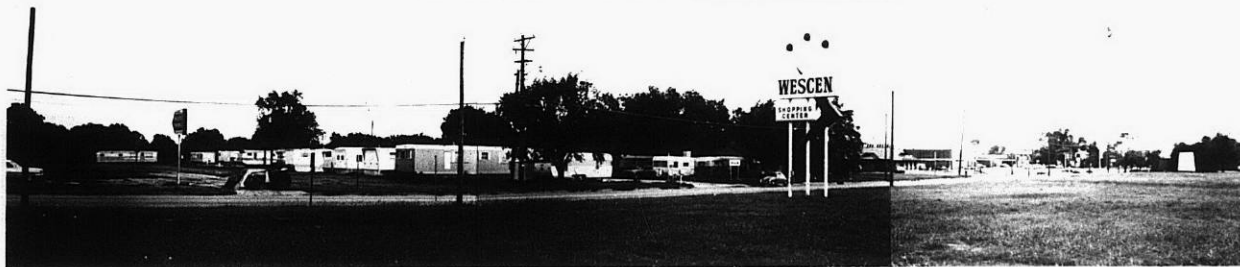
311  
 312

1.



Z-1023

2.



3.



XTE

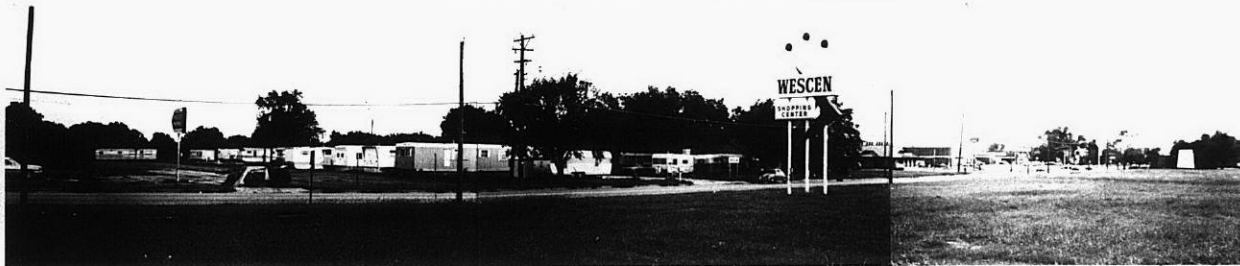
XTE

Z-1023

1.



2.



3.



WCE

WCE