

NO. 7-1046 "AA" to "LC"

DESC Northeast corner of Central and Beebe

---

BY Betty Sauer, et al by Richard Loyd

DOA	BODY	ACTION	NOTICES
<u>11-27-68</u>	<u>MAPC</u>	<u>approved, suby to platting</u>	
<u>12-17-68</u>	<u>BCC</u>	<u>approved</u>	<u>"</u>

---

file discarded 2-8-82

---

RESOLUTION NO. ~~7-9859~~ PUBLISHED May 9, 1969

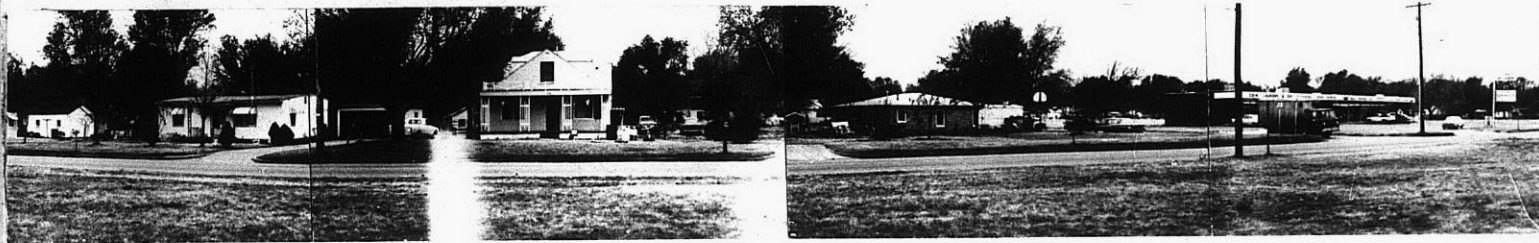
T 9-201 30-341

2-1046

311

34X

Z-1046



1.



2.



3.



4.

314

XFE