

NO. Z-1089 "AA" to "C"

DESC Between Kellogg and Kansas Turnpike in an area east of Eastern.

BY Arthur Lankin by Richard Loyd. NOTICES
DOA BODY ACTION
3-27-69 MAPC

Delayed to be re-advertised
4-10-69 MAPC approved, sub to platting

4-29-69 BCC approved

5-27-69 BCC, 1st reading on approval
Clarke agenda

Close & file discarded 2-8-82

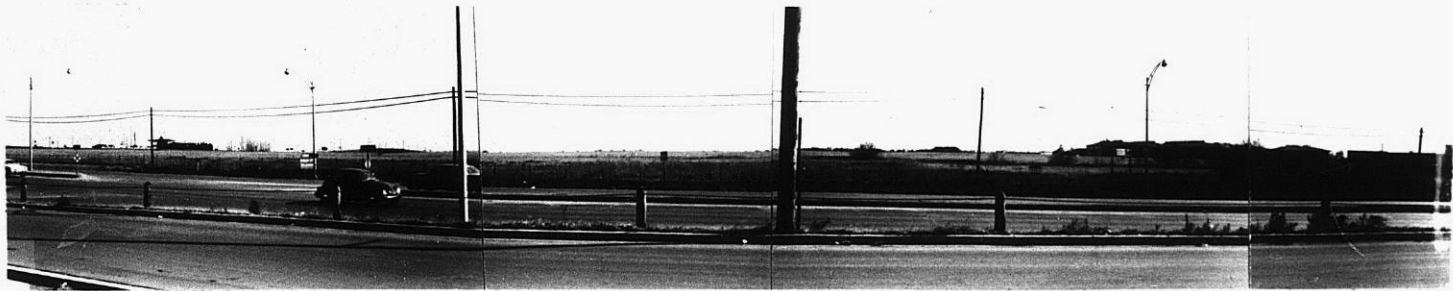
RESOLUTION NO. 30-625 PUBLISHED 6-9-69
T 9-201

2-1089

314

314

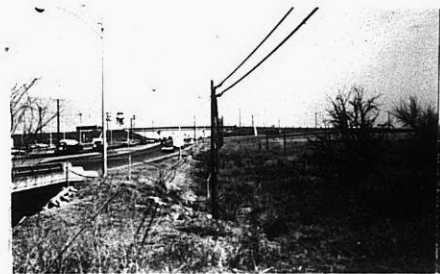
Z-1089



1.



2.



3.

Z-1089



4.



5.



6.

ATS

XBE