

NO. Z-1246 "B" to "LC" 5746

Desc On the north side of Harry in an area between
Bluffview and Terrace Drives

BY Kenneth P. Betzen, et al (William P. Higgins)
DOA BODY ACTION NOTICES

1-28-71 MAPC Approve subj. to platting
3-16-71 BCC Approve as recommended
6-22-71 BCC Ord. on 1st Reading on
City Clerk's agenda

File discarded 2-8-82
RESOLUTION NO. 31-688 PUBLISHED July 7, 1971
T 9-201

Z-1246

311

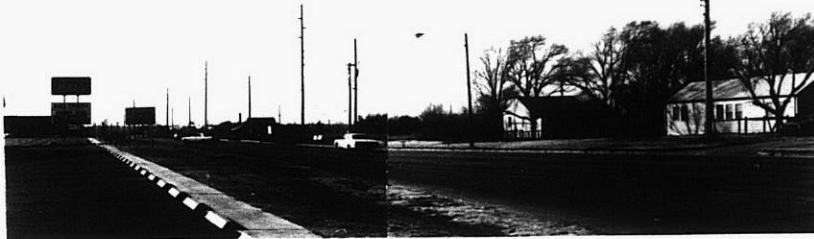
XBE

2-
1246

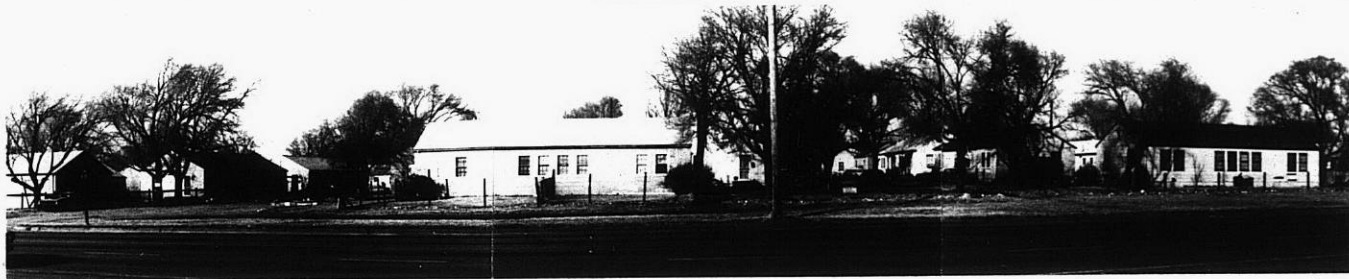
1.



2.



3.



4.

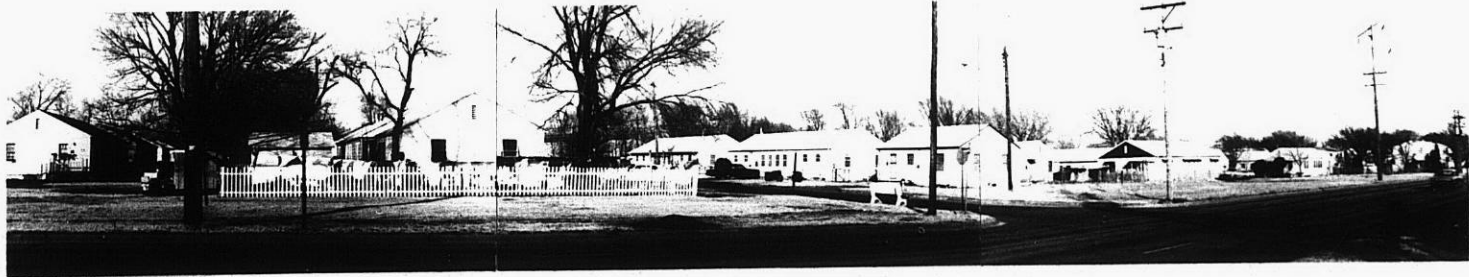


5.



6.

7.



153

34x

4.

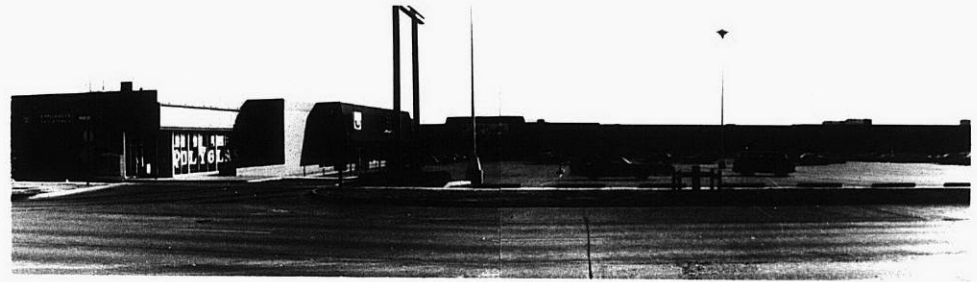
5

6.

7.



8.

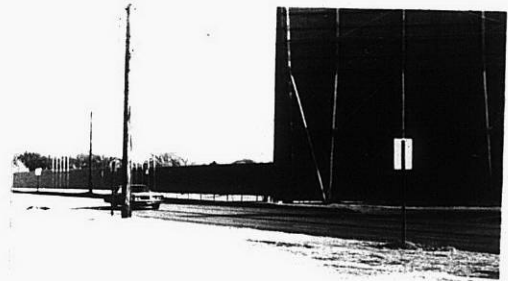


2-1246

9.



10.



113

113