

NO. Z-1266 "AA" to "RB"

Desc To the NW of Mulberry Lane in an area between

Summitlawn and Sandplum

BY Jerry B. Malone ( by E. L. Malone)

DOA BODY ACTION NOTICES

3-25-71 MAPC *Very*

4-26-71 BCC *Approve as recommended*

*Denied*

*file discarded 3-8-82*

RESOLUTION NO. \_\_\_\_\_ PUBLISHED \_\_\_\_\_

T 9-201

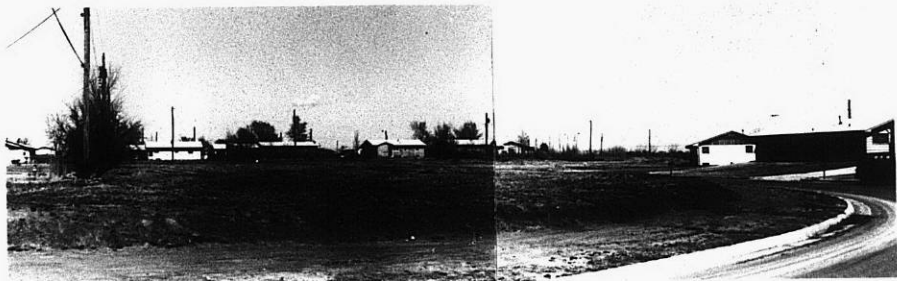
Z-1266

XTE

XTE

Z-1266

1.



2.



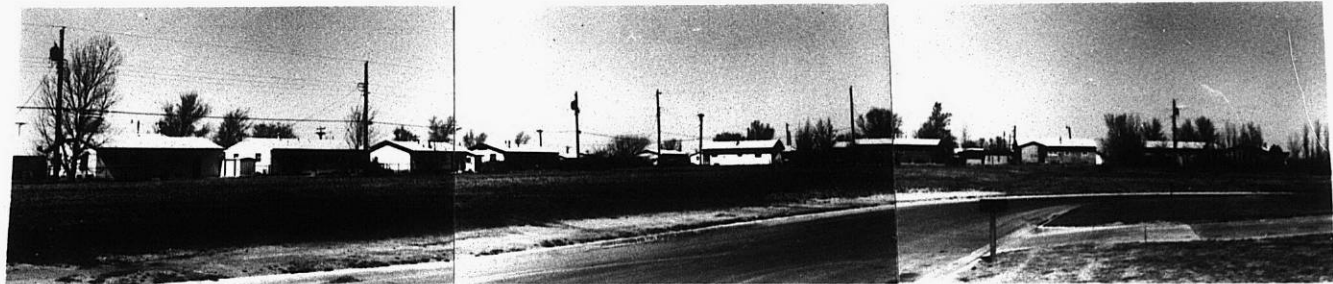
3.



4.



5.



31

34x

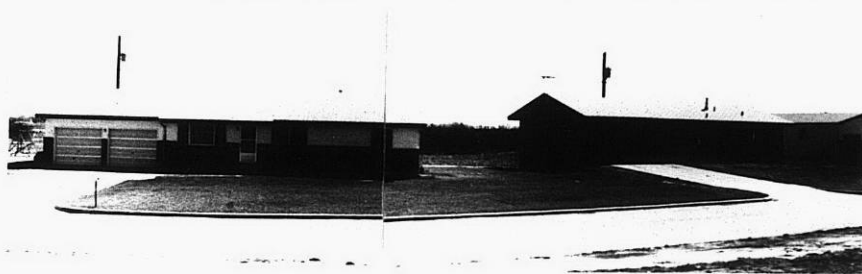
5.



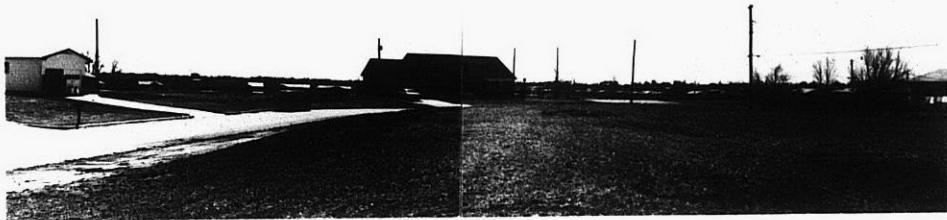
6.



7.



8.



2-1266

STE

XTE