

NO. Z-1279

"A" & "B" to "BB" (564)

Desc On the east side of Lorraine in an area between
Central and Elm

BY Betty A. Poling (by Dale Stuckey)

DOA BODY ACTION NOTICES

5-13-71 MAPC Approve subj. to replat

6-1-71 BCC Approve as recommended

5-9-72 BCC Ord. on 1st reading on
City Clerk's agenda

File discarded 2-8-82

RESOLUTION NO. 32,165 PUBLISHED 6-16-72

T9-201

2-1279

121

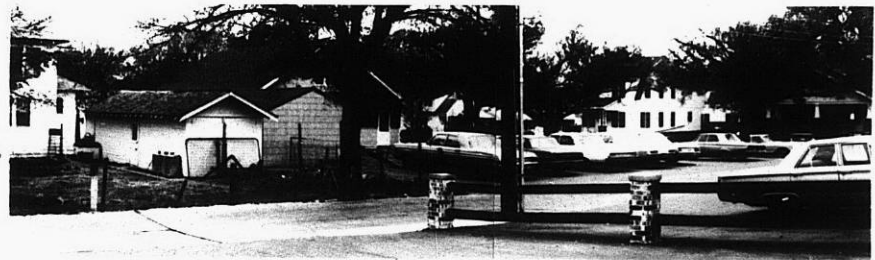
121

Z-1279

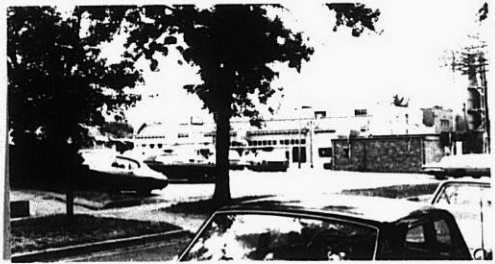
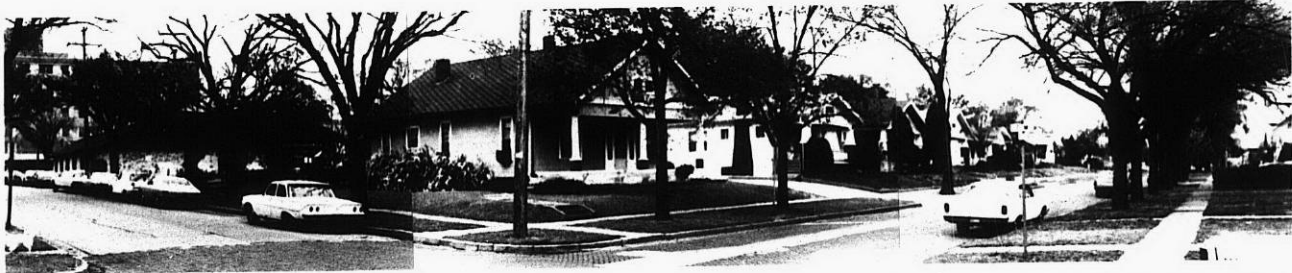
1.



2.



3.



4

5.

310

34X