

NO. 2-1301 "A" to "B" (5447)

Desc. At the southwest corner of Hillside and Lewis

By Music Service Company, Inc. by Ernest McRae

DOA	BODY	ACTION
<u>8-12-71</u>	<u>Map</u>	<u>Approved, subject to dedication</u>
<u>8-31-71</u>	<u>B.C.</u>	<u>Approved, subject to cost ded.</u>

file discarded 8-9-82

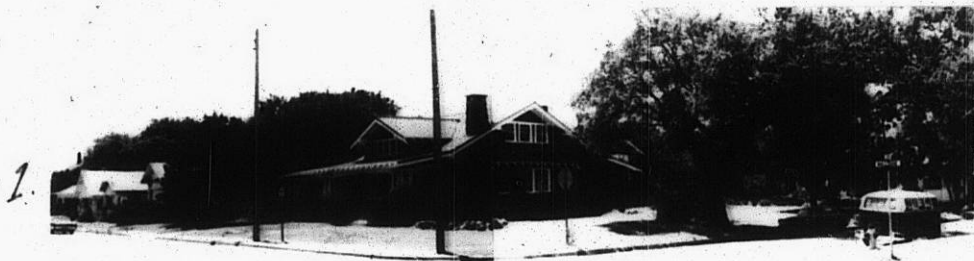
Resolution No. 21762 Published 7-18-71 (T9-201)

2-1301

TE

TE

Z-1301



31

34x