

Z-1320

STE

STE

NO. Z-1320 "AA" to "BB" (5248)

Desc At the northeast corner of Central and Kessler

BY C. A. Langhofer
DOA BODY ACTION NOTICES

9-23-71 MAPC Approve subj to Lot Split

10-12-71 BCC Approve as recommended

file discarded 2-9-82

RESOLUTION NO. 31869 PUBLISHED 11-30-71
T9-201

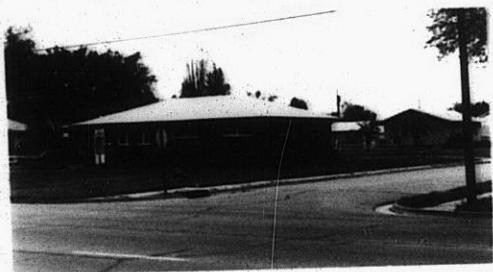
Z-1320

319

320

Z-1320

1



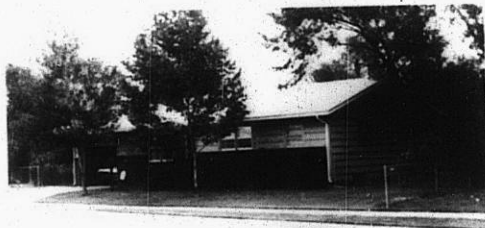
2



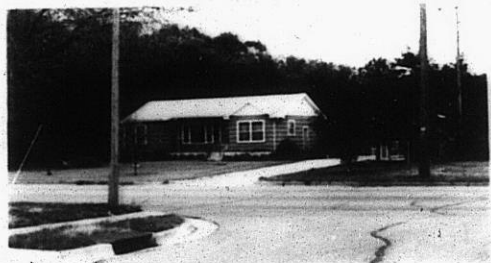
3



4



5



6



STE

XBE