

NO. Z-1331 "B" to "LC" (5746)

Desc. On the east side of Bluffview in an area between
Harry and Wilma

By H. Stan Chilton, by Ernest McRae
DOA BODY ACTION

10-14-71 mapc Approve only to replat
11-2-71 BCC Approve as recommended

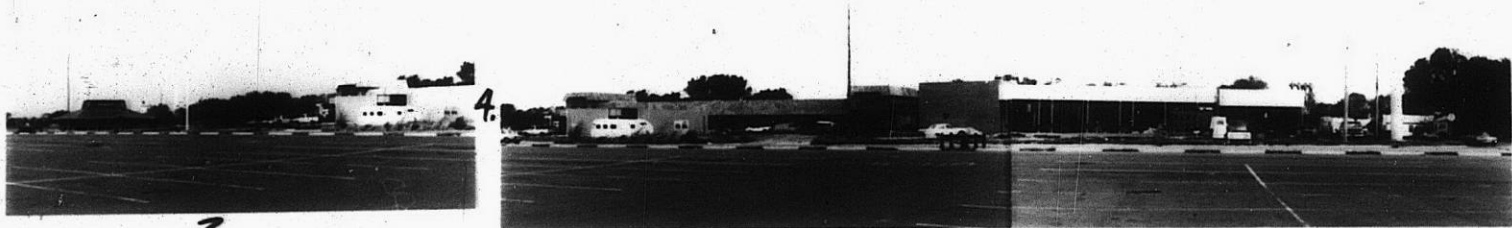
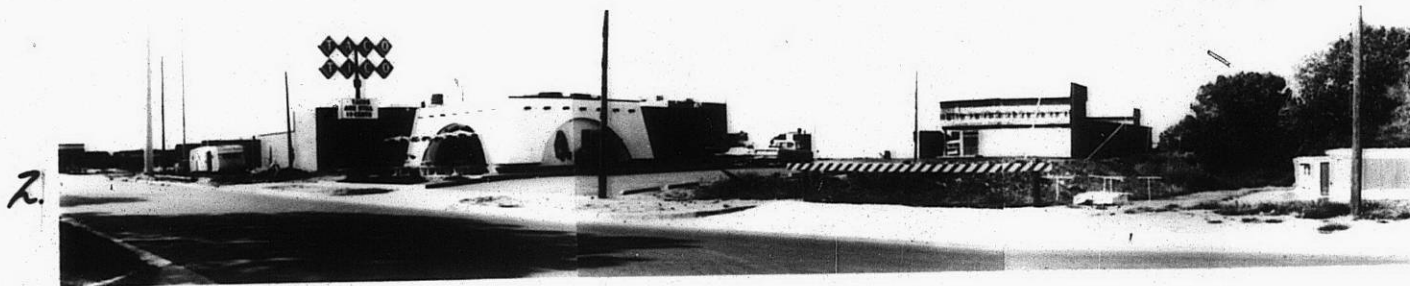
file discarded 2-9-82
Resolution No. 32-179 Published 6-15-72 (T9-201)

Z-1331

31

32

Z-1331



XBE

XBE