

NO. Z-1332 "RB" to "BB" 5746

Desc. On the east side of Hillside in an area between Kellogg and Orme

By Edger Elmer Mehl by Robert M. Moore

DOA	BODY	ACTION
10-14-71	MAPC	App. only to dedication
11-2-71	BCC	Refer 2 weeks
11-16-71	BCC	Approve spec. 2 1/2 ft alley ded. not reg'd. & cont. ded. &
<u>File discarded</u>		with. ded. ea 10 ft
<u>2-9-82</u>		for Hillside reg'd.

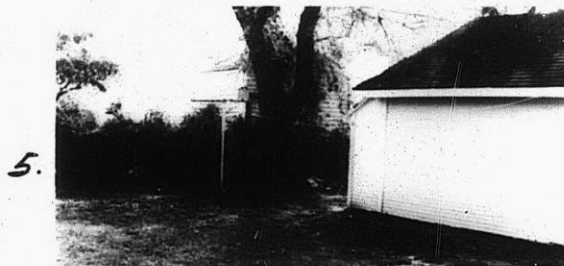
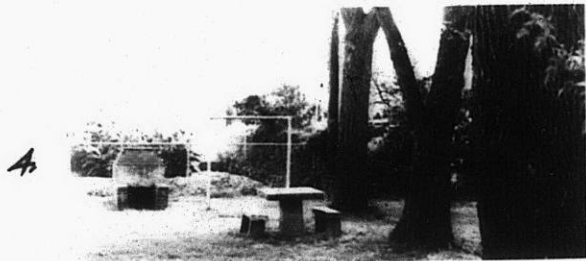
Resolution No. 31-919 Published 11-30-71 (T9-201)

Z-1332

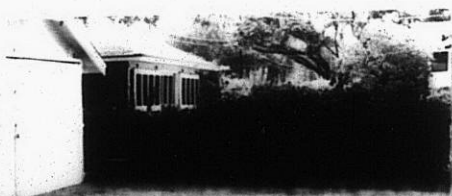
319

34x

Z-1332



Z-1332



1332

1332

2.



3.



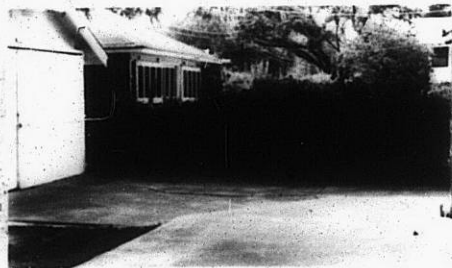
4.



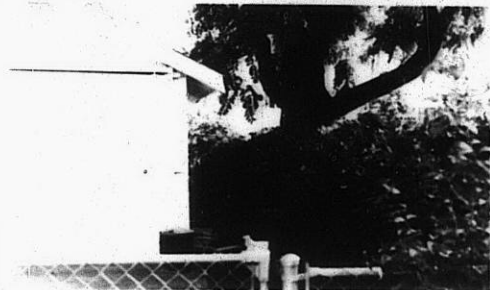
5.



Z-1332



6.



7.



311

312