

NO. 2-1335 (5244) "AA" to "E" and "E" to "F"

Desc. A tract over 1/2 mi. deep on the S side of Pawnee from 1/2 mi. E of West St. to 930 ft. W of said 1/2 mi. line; and on a tract at the SE corner of Pawnee & West St.

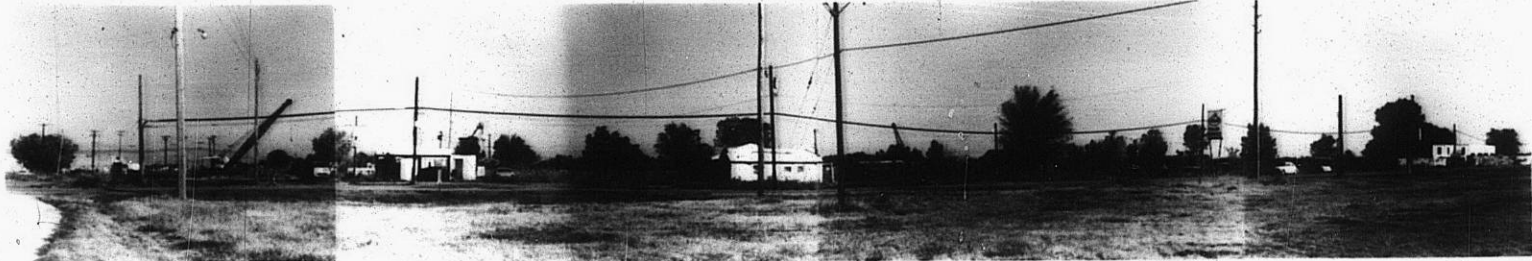
By Earl VanMeter Long, et. al. *file discarded 2-9-82*

DOA	BODY	ACTION
10-28-71	MAPC	Approve only N portion of tract
11-16-71	BCC	Approve as recommended
1-25-72	BCC	ordinance on 1 <sup>st</sup> reading on City Clerk's agenda for east portion of subject property
7-31-73	BCC	ordinance on 1 <sup>st</sup> reading in City
8-7-73	Approve	Clerk's agenda for remaining area

Resolution No. 32-010 Published 2-11-72 (T9-201)  
Res. No. 32-798 <sup>adopted 1st</sup> 8-10-73 (AA" to "E"

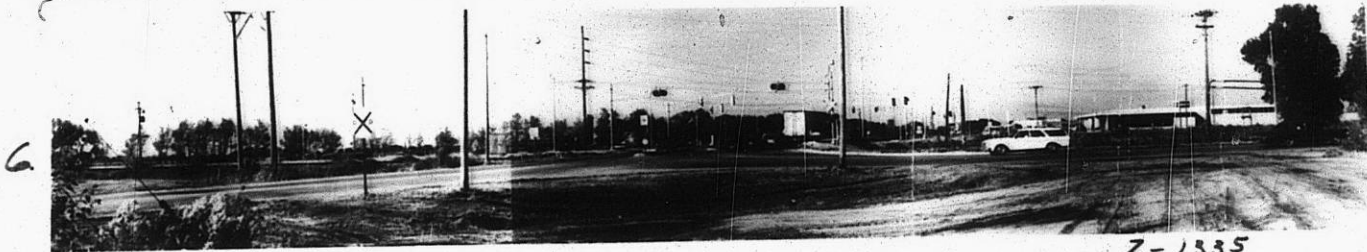
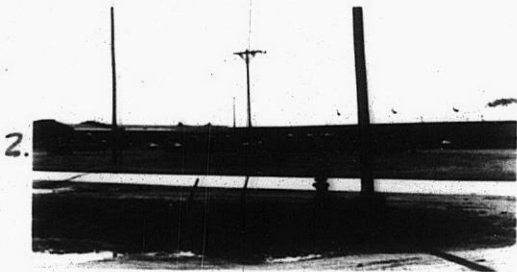
2-1335

319  
342



1

Z - 1535

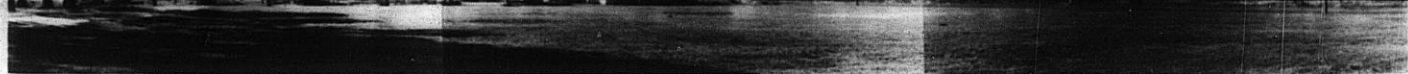


Z - 1535



34

34x

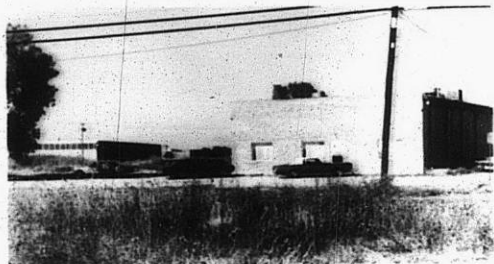


6



Z-1335

7.



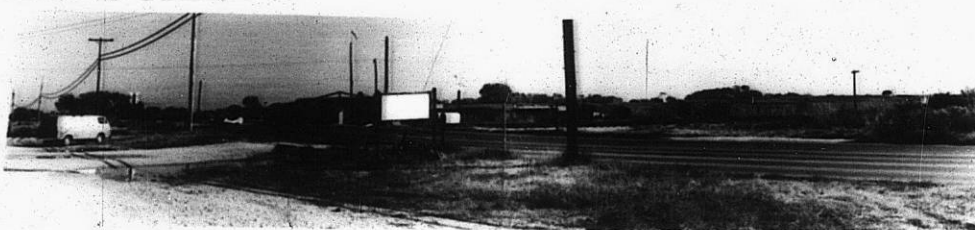
8.



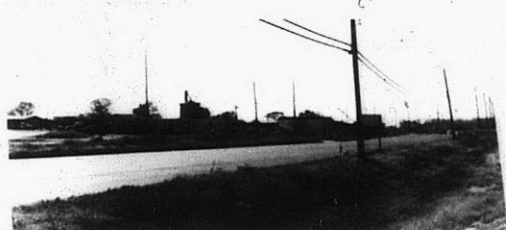
9.



10

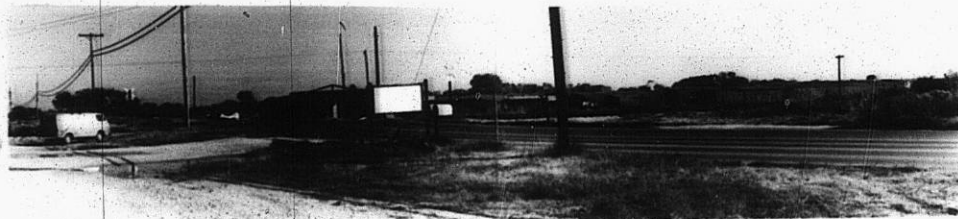


11.

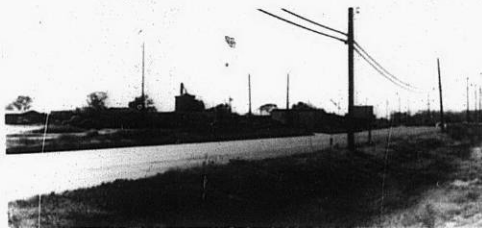


34X

10



11.



12.



Z-1335



13.



14.



15.

310

34X