

NO. Z-1342

"A" to "R-6" (5648)

Desc. On the east side of Spruce in an area between Elm
and the Frisco Railroad

By Wichita URA, by Gary Roush = Operations Officer

DOA	BODY	ACTION
<u>11-29-71</u>	<u>MAPC</u>	<u>Approve</u>
<u>12-21-71</u>	<u>ACC</u>	<u>Approve</u>

file discarded 2-9-82

Resolution No. 31-964 Published 12-30-71 (T9-201)

Z-1342

314

X4E

Z-1342



1.



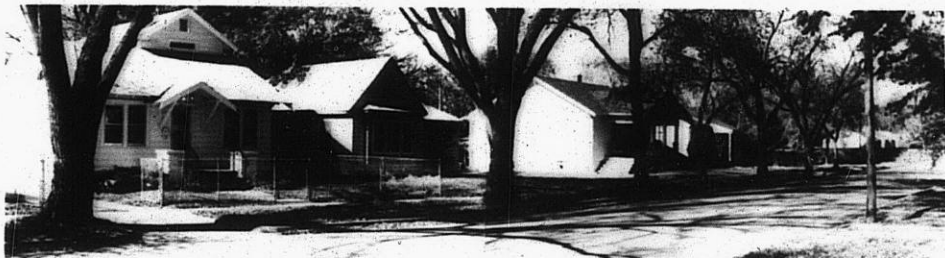
2.



3.



4.



5.

310

34X