

NO. Z-1356

"AA" to "R-6"

Desc. On the east side of Maple Lane in an area between
Maple and Taft

By Thelma J. Grantham, et. al. by Craig S. Feagins

DOA	BODY	ACTION
2-10-72	MAPC	Approve subject to platting
2-29-72	BCC	Return to Mapc.
2-9-72	MAPC	Approve "R-5" subject to platting
3-21-72	BCC	Refer one week
3-28-72	BCC	Refer to 4-25-72
4-25-72	BCC	Refer 1 week
5-2-72	BCC	Refer (2)

Resolution No.

Published

Close 5-2-72

file discarded
(T9-201)
2-9-82

2-1356

319

348

2-1356

1.



2.



3.



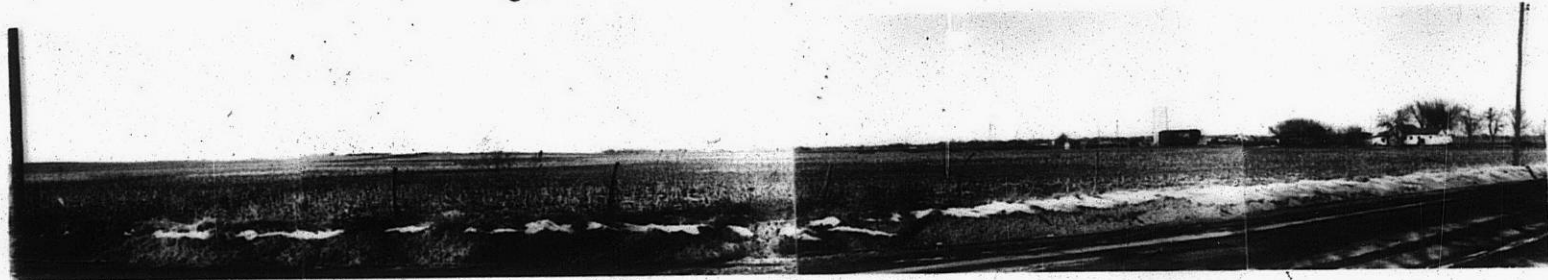
4.



5.



6.



7.

X 1356

5.



6.



7.



8.



9.

10.



Z-1356

135

135

135