

Z-1357

500

1357

Z-1357



Z-1357

4.



5.



319

34x

2-1357

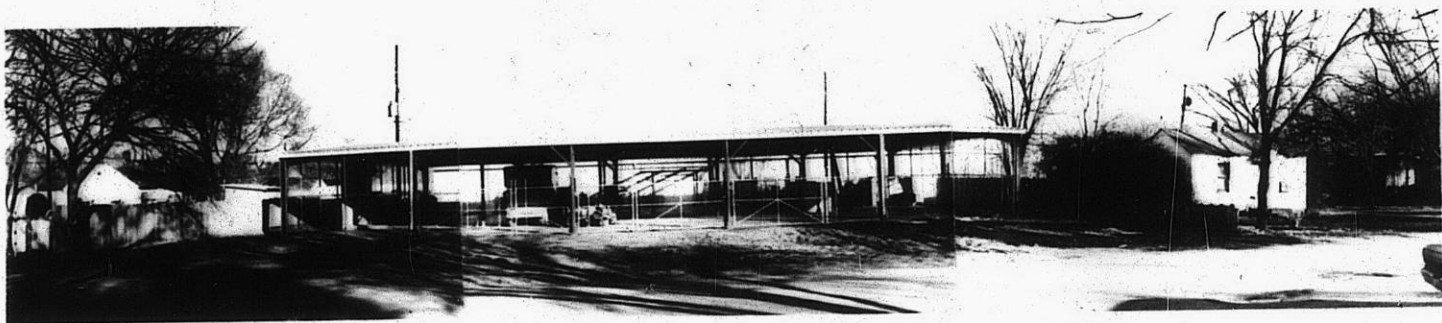
4.



5.



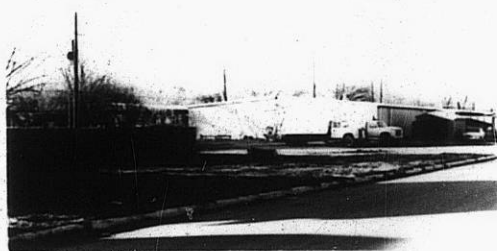
6.



7.



8.



310

311

NO. 2-1357

5450

"B" to "C"

Desc. On the East side of Wellington Place in an area  
South of 29th Street North

By Walter Palmer, et. al, by Artie E. Vaughn  
DOA            BODY            ACTION

2-10-72    MAPC    Approved subject to platting

2-29-72    BCC    Approved as recommended

2-9-73    City Manager extended time to April 1, 1973

4-29-73

8-29-73    Expiration date for completion of plat

CLOSED 8-29-73 File discarded 3-9-82

Resolution No. 33-526 Published 10-29-74 (T9-201)

2-1357

319

342