

NO. Z-1358 "AA" TO "A" (5946)

Desc. At the southwest corner of Lincoln and Doreen

By Carl D. Farmer, et. al. by G. C. Nance, Jr.

DOA	BODY	ACTION
<u>2-10-72</u>	<u>MAPC</u>	<u>App. only to let split</u>
<u>2-19-72</u>	<u>ALL</u>	<u>Approve as recommended</u>

file discarded 2-9-82

Resolution No. 32-080 Published 3-24-72 (T9-201)

Z-1358

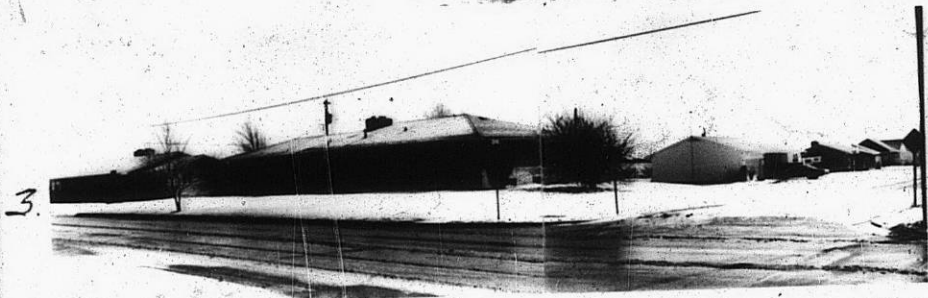
319

348

2.



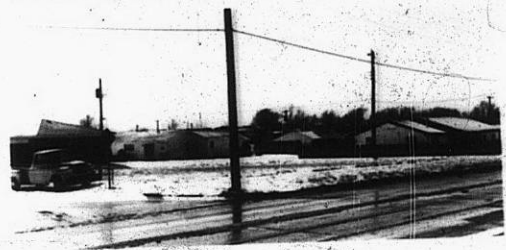
2



3.



4.



5.

2-1358

319

34x