

NO. Z-1368 "G" to "C" (5343)

Desc. At the northwest corner of Seneca and Carey Lane

By Seneca Construction, Inc. by C. J. Mendenhall

DOA	BODY	ACTION
<u>2-24-72</u>	<u>MAPC</u>	<u>along "C"; App. re. subject sidewalks</u>

3-14-72 BCC Approve as recommended

file discarded 2-9-82

Resolution No. 32-100 Published 5-24-72 (T9-201)

Z-1368

319

34x

2-1368

1.



2.



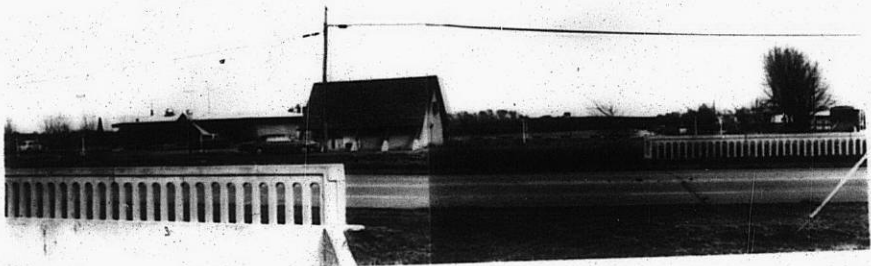
3.



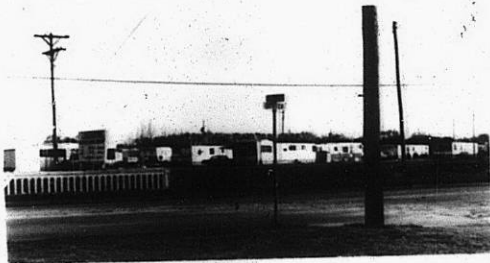
A.



5.



6.



318

34X