

NO. Z-1375

"AA" to "R-6"

Desc. At the northeast corner of Woodlawn and Rockhill

By Wichita Methodist District Union by Robco, Inc.

DOA	BODY	ACTION
3-23-72	MAPC	Refer
4-13-72	MAPC	App "R-5" only to plat
5-2-72	BCC	App as recommended

Denied and closed 5-2-73

Resolution No. file discarded 2-9-82 Published (T9-201)

2-1375

34

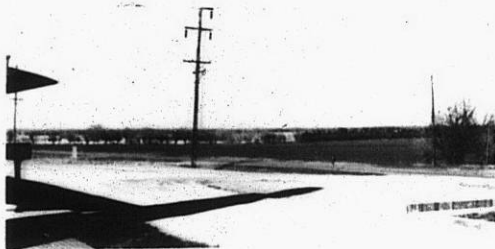
34

2-1375

1.



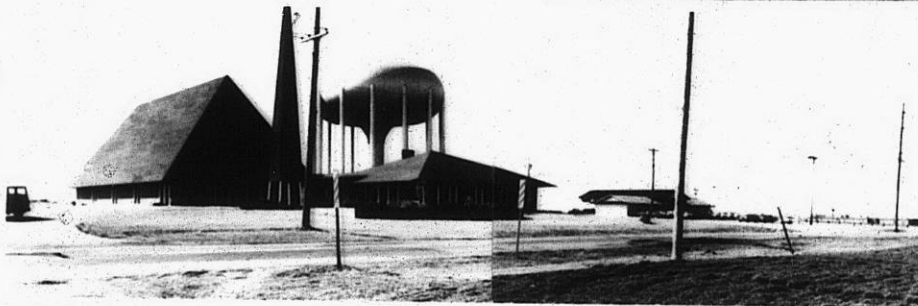
2.



3.



4.

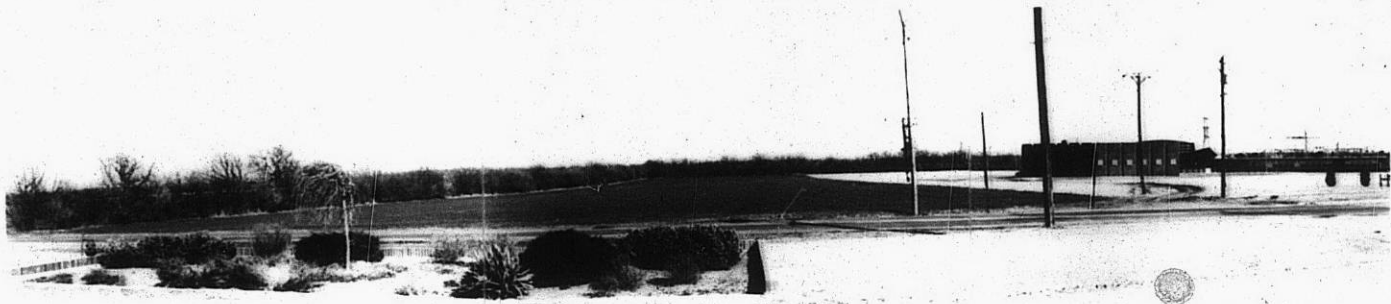


310

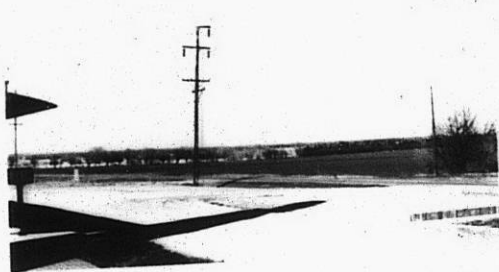
311

2-1375

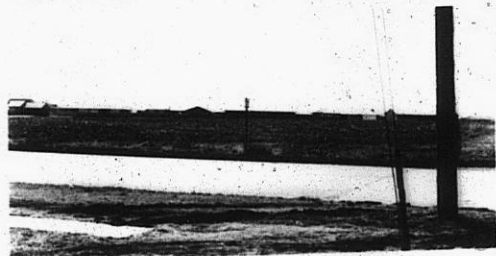
1.



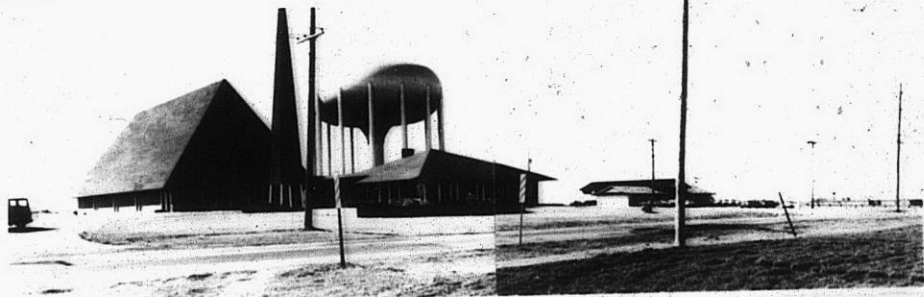
2.



3.



4.



31

34x