

NO. Z-1387 "C" to "LC" (5349)

Desc. At the northwest corner of 13th and Perry

By Board of City Commissioners by MAPD

DOA BODY ACTION

5-11-72 MAPC approve

5-30-72 BCC approve

file discarded 2-9-82

Resolution No. 32-187 Published 6-9-72 (T9-201)

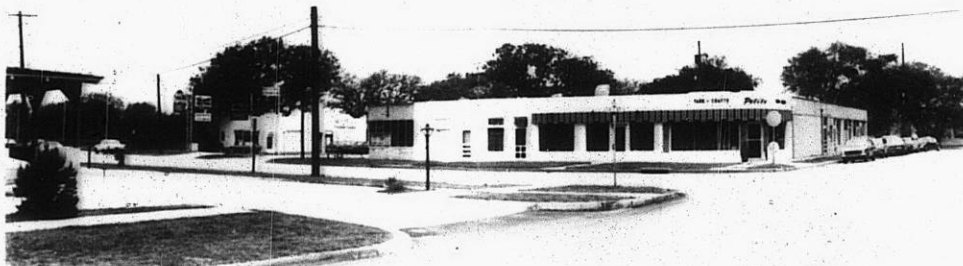
Z-1387

TE  
TE

1.



2.



3.

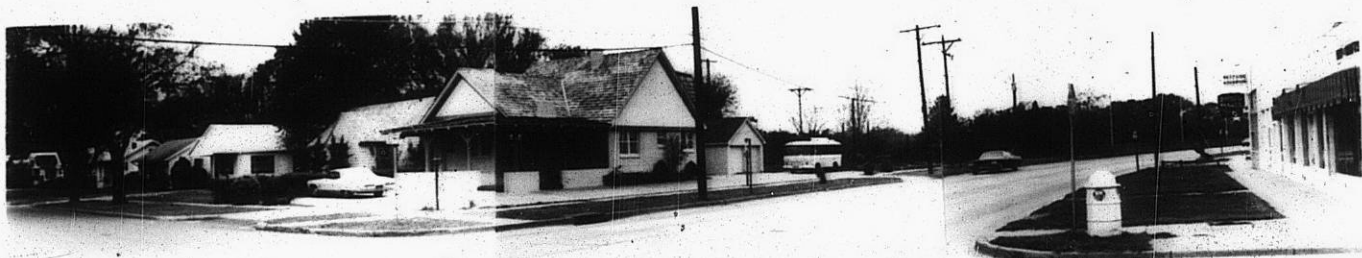


2-1387

4.



5.



2-1387

34x

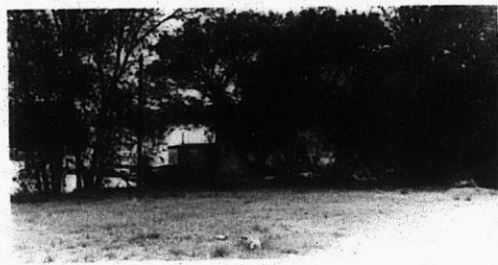
5.



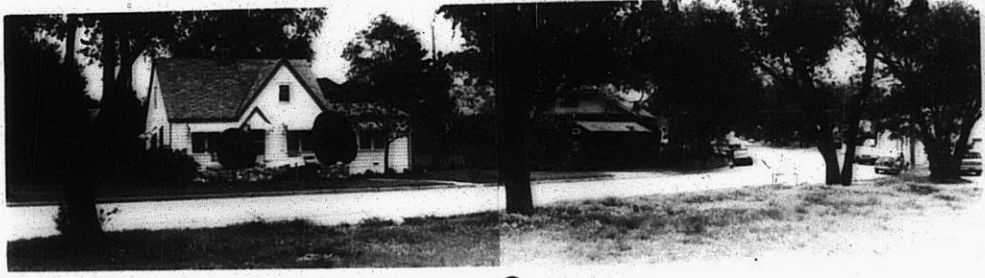
Z-1387



6.



7.



8.

STE

XBE