

NO. Z-1392

"A" & "LC" to "LC"

Desc. On the west side of Hydraulic in an area between
Lincoln and Bayley

By Wm. J. Karleskint, et. al. by Robert M. Moore

DOA	BODY	ACTION
5-25-72	MAPC	deny <i>file discarded 2-9-82</i>
6-13-72	BCC	returns to MAPC
7-13-72	MAPC	Deferred for full Commission
7-27-72	MAPC	Deferred for full Commission
8-10-72	MAPC	Deferred for full Commission
8-24-72	MAPC	Failure to recommend
9-12-72	BCC	Approved subj to replating
Resolution No.		Published (T9-201)
DENIED AND CLOSED 11-20-73		

Z-1393

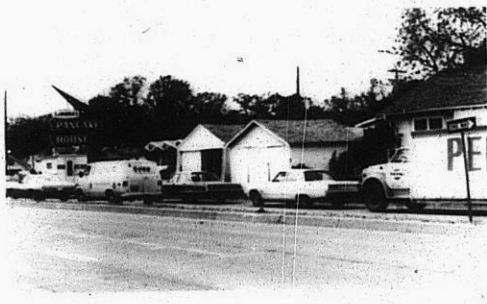
319

XFE

2-1393



2.



3.



4.

310

348

NO. Z-1393

"A" to "IC"

(564)

Desc. At the northwest corner of Kellogg and Mountain
LORRAINE

By M. E. Bennett by Dale B. Stinson, Jr.

DOA	BODY	ACTION
5-25-72	MAPC	approve, subj to replating
6-12-72	BCC	return to MAPC
7-13-72	MAPC	approve subj to replating
7-26-72	BCC	approved as recommended

file discarded 2-9-82
Ordinance Resolution No. 32-626 Published 8-1-73 (T9-201)

Z-1393

311

312

2-1393

1.



2.



3.



4.

3E

X 3E