

NO. Z-1401 "A" to "BB"

Desc. At the southwest corner of 17th & Oliver

Wichita Guidance Center by Richard A. Loyd

By	DOA	BODY	ACTION
	7-13-72	MAPC	<i>Withdrawn by the Applicant</i>

Closed
file discarded 2-7-82

Resolution No. _____ Published _____ (T9-201)

Z-1401

313

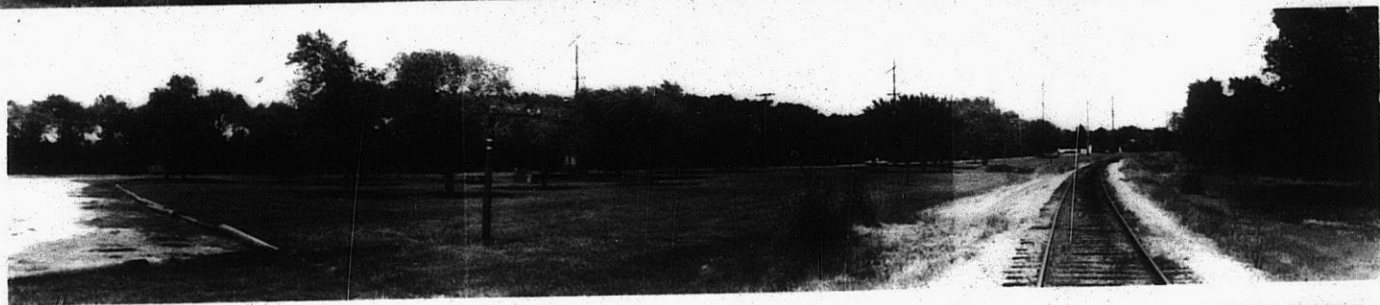
313

2-1401

1



2.



3.

319

319