

NO. Z-1410 D.D. Hale Add "AA" to "C"
Desc. North side of McArthur in an area between east
of Broadway and ~~Hydraulic~~
By Raymond & Pauline James, et al. (Joe Redmond, Atty.)
DOA BODY ACTION
8-10-72 MAPC Approved subj to platting
8-29-72 BCC Approved
file discarded 2-9-82
Denied & Closed. failure to complete
plat.
Resolution No. _____ Published _____ (T9-201)

Z-1410

~

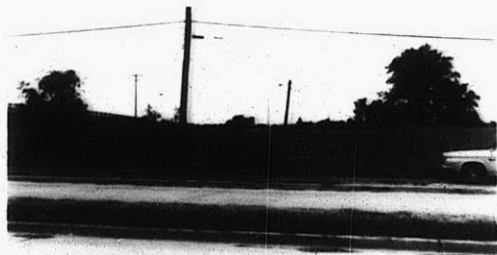
310

310

1.



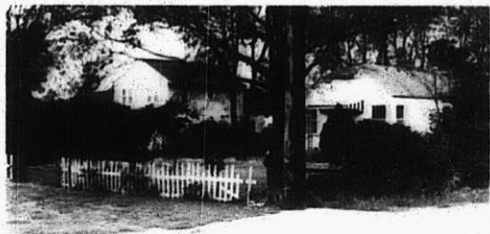
2.



3.



4.



5.



2-1410

319

34x