

Map 5244A

NO. Z-1422

"R-5"

"AA" to "R" & "AA" to "E" (5244)

Desc. Between Pawnee and 27th St. South in an area west
of St. Paul

By Wichita Builders, Inc. by Eugene G. Coombs

DOA	BODY	ACTION
9/14/72	MAPC	Approve subj. to platting
10-3-72	BCC	Approved for E except 15 165'
		approved for R-5 subj. to platting
		file discarded 2-9-82

Ordinance Resolution No. 32-470 Published Jan 24, 1973 (T9-201)

Z-1422

131

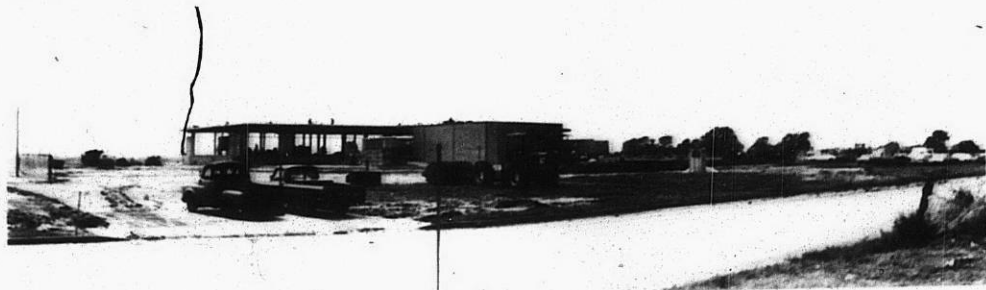
132

2-1422

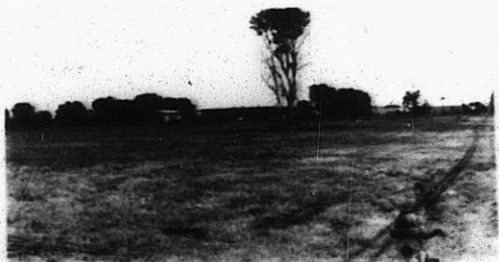
2



2



3



310

XBE

5

6

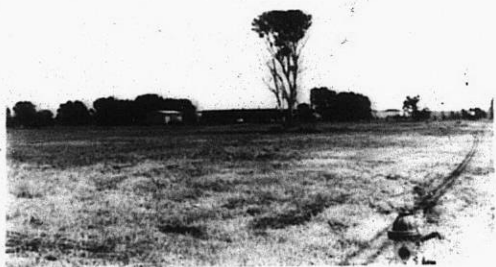
2



2



3



4



5



6



7. 2-1422



8



9



310

34x

7. 2-1422

8.

9.



10.

11.

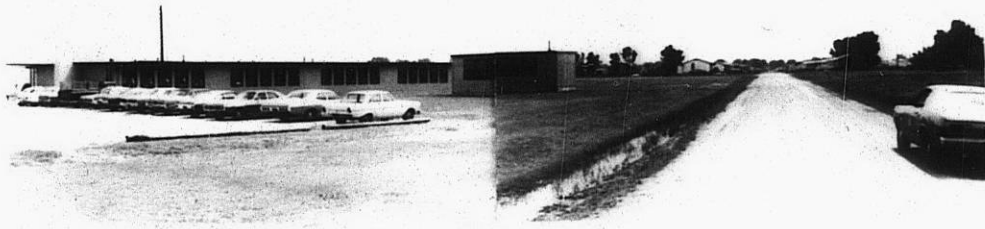
12.



2-1422



13.



14.

319

34x