

NO. Z-1435 "A" to "BB" (5647)

Desc. Northeast corner of Lorraine and Murdock

By Leslie W. Griffith

DOA	BODY	ACTION
9/28/72	MAPC	Approved subj to dedication
10-3-72	BCC	Approved

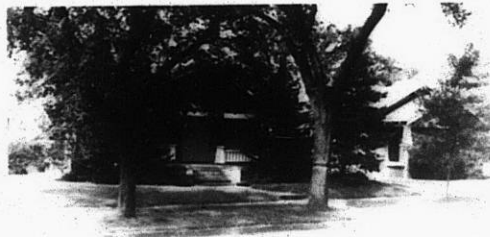
*file discarded 2-9-82*

Ordinance Resolution No. 32-382 Published 11/10/72 (T9-201)

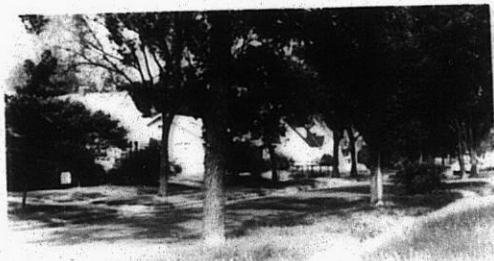
Z-1435

131  
132

1.



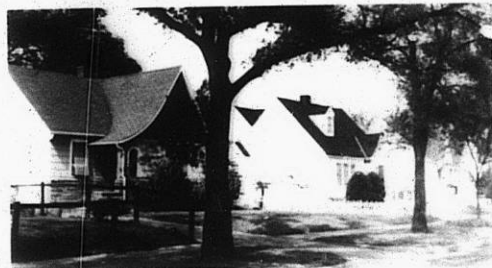
2.



3.



4.

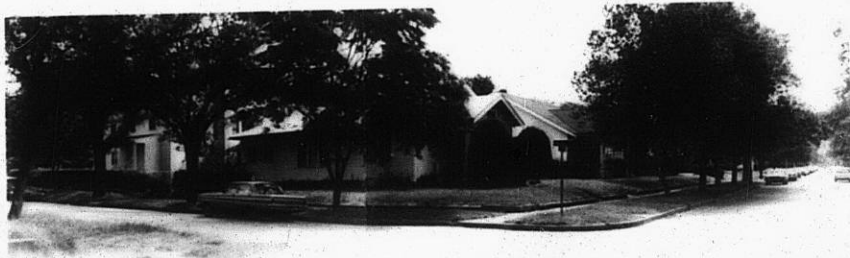


5.

6.



Z-1435



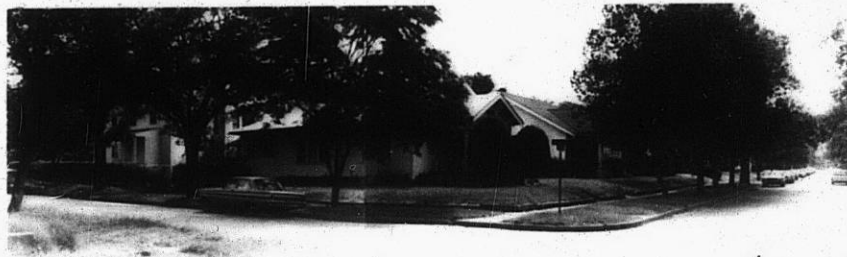
111

112

6.



Z-1435



7.

8.



9.



10.



11.

Z-1435

310

34x