

NO. Z-1440

AA to BB
American Landmark Corp. (544)

Desc. Southeast corner of Morris and Oliver

By D. L. Pomeroy by American Landmark Corp.

DOA	BODY	ACTION
<u>10/12/72</u>	<u>MAPC</u>	<u>Approved subj to dedication</u>
<u>10/31/72</u>	<u>BCC</u>	<u>Approved as recommended</u>

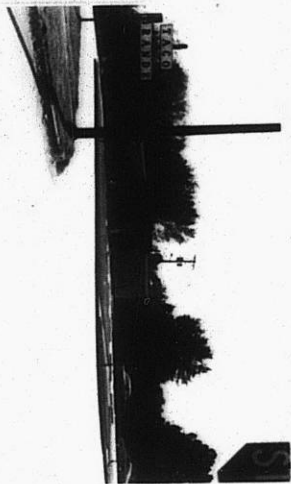
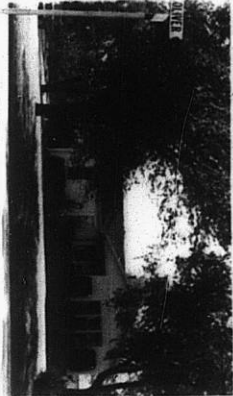
file discarded 2-9-82

Ordinary
Resolution No. 32-383 Published 11-10-72 (T9-201)

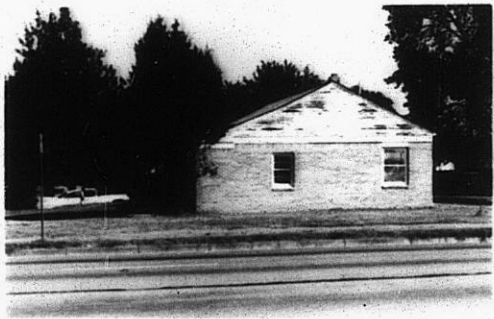
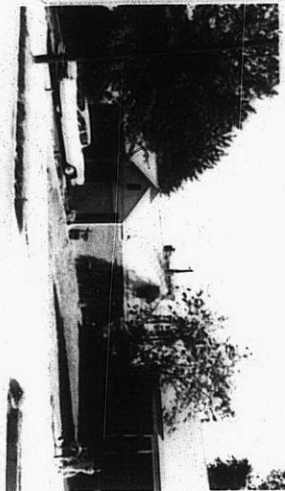
Z-1440

311

312



2-1440



300

XBE