

NO. Z-1442

"AA" to "IC"

Desc. On the North side of Douglas in an area East of

Rock Road

By Robert H. Nelson

DOA	BODY	ACTION
10/26/72	MAPC	Deferred
11-27-72	MAPC	not approved
12/19/72	BCC	Returned to MAPC
1-11-73	MAPC	Approved subject to platting
1-30-73	BCC	Denied

file discarded 2-9-82

Resolution No. _____ Published _____ (T9-201)

Z-1442

131

132

1.



2.

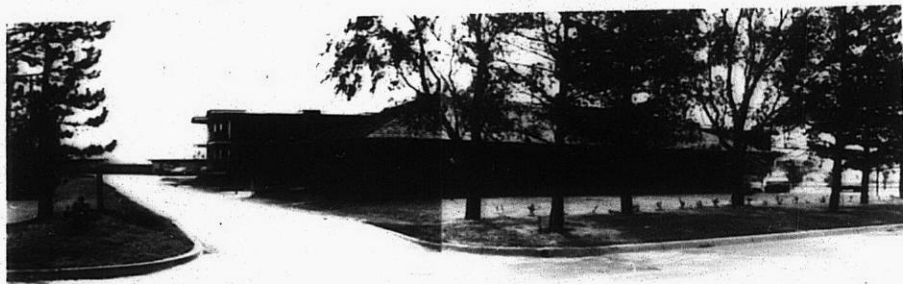


Z-1442

3.



4.



5.



310

311



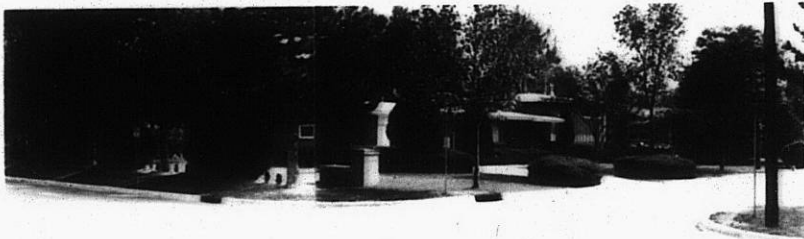
4.



5.



6.



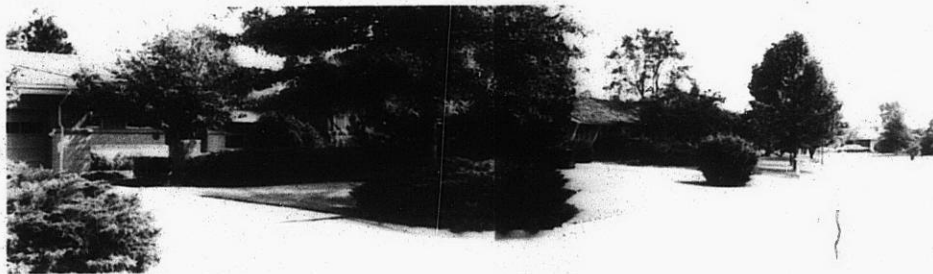
7.



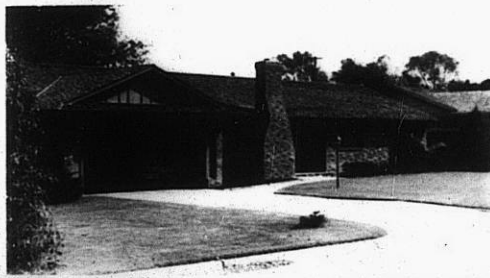
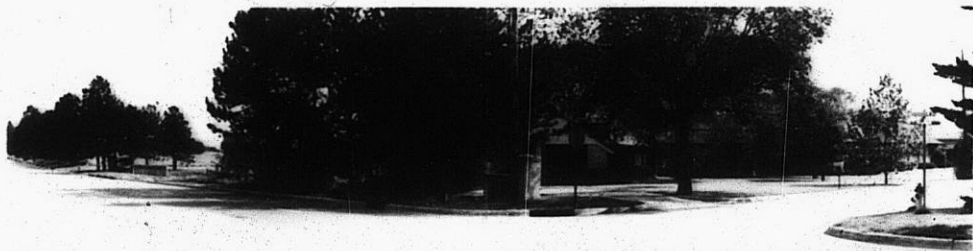
8.



9.



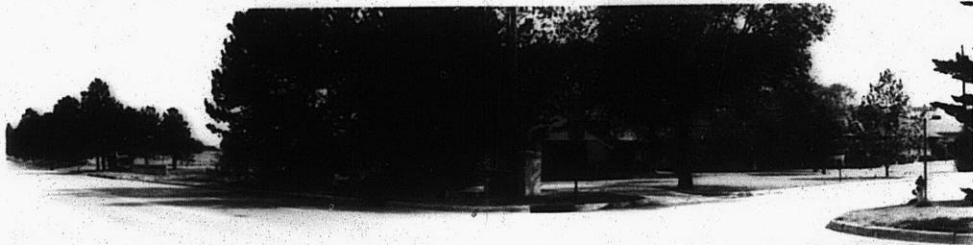
2-1442



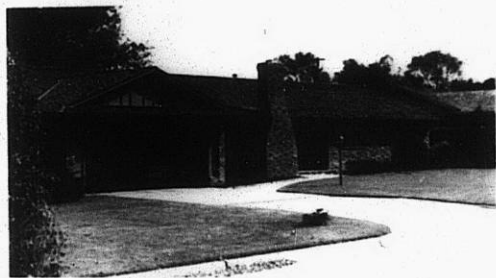
10.

X 10 E

2-1442



10.

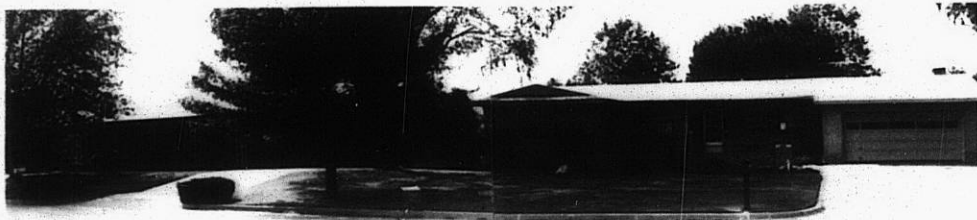


11.



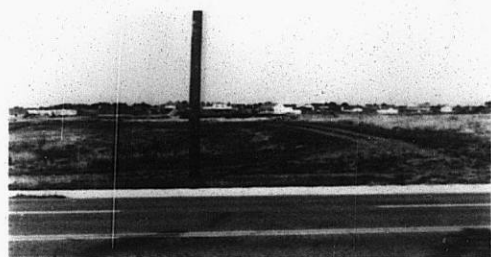
12.

13



14.

2-1442



15.

3E

X 3E