

NO. Z-1506

"B" to "BB"

(574)

Desc. On the West side of Terrace Drive between Harry
and Wilma

By H. Stan Chilton by Ernest McRae

DOA

BODY

ACTION

4-16-73

MAPC

Approved sub. to sidewalks

5-8-73

ACC

Approved as recommended

file discarded 2-9-82

Ordinance

Resolution No. 32-680

Published 5-18-73

(T9-201)

Z-1506

STE

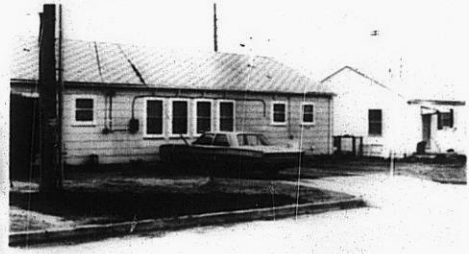
STE

Z-1506

1.



2.



3.

4.



310

XBE