

NO. Z-1509

"AA" to "R-6"

Desc. At the Northwest corner of Meridian & Crawford

By R.B.R., Inc. & S. J. Willis & Blanche by M.W. Renollet

DOA	BODY	ACTION
4-16-73	MAPC	Approved only to replatting
5-8-73	BCC	Returned to MAPC for office ^{with} with
3-24-73	MAPC	Approved only to replatting
6-12-73	BCC	Approved as recommended
1-6-75		Denied - Closed Failure to plat ^{JHS}

Registration No. file discarded 2-9-82 Published _____ (T9-201)

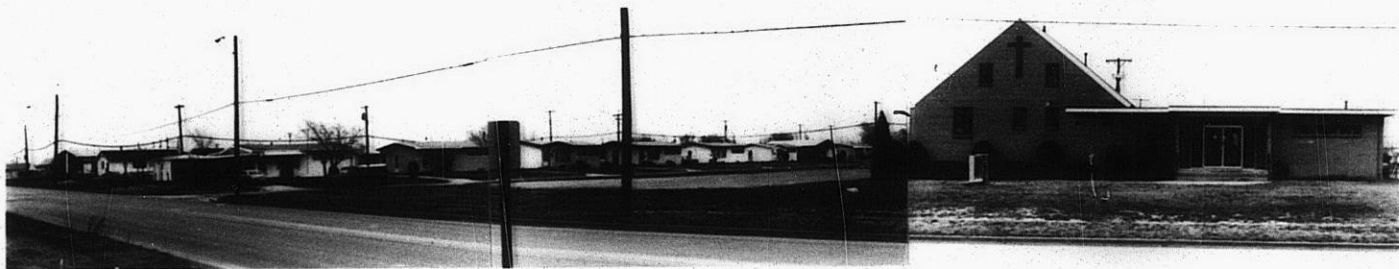
Z-1509

131

131

Z-1509

1.

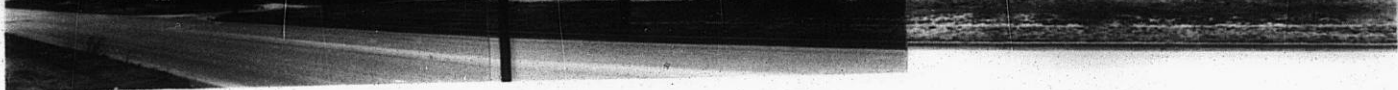


2.

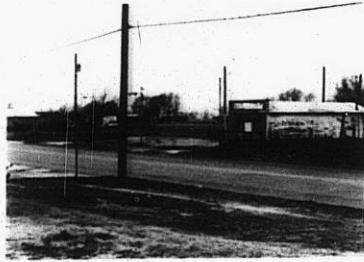


31

34x



2.



3.



4.



Z-1509 5.



6.



7.

319

X 319