

NO. Z-1512 "AA" to "LC" (5946)

Desc. On the West side of Calhoun and the East side of Whitter in an area South of Kellogg

By Edward M. Steven, et al by Alan M. McHenry

DOA	BODY	ACTION
<u>4-16-73</u>	<u>MAPC</u>	<u>Approved subj to replatting</u>
<u>5-8-73</u>	<u>BCC</u>	<u>Approved as recommended</u>

Ordinance # 32-713 Published 7-2-73 (T9-201)  
Resolution No. file discarded 2-9-82

Z-1512

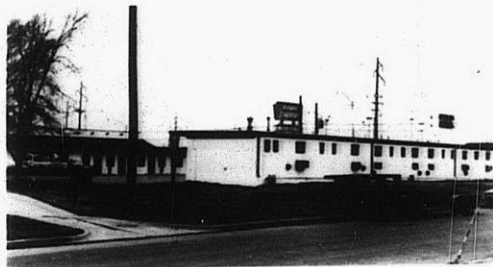
319

347

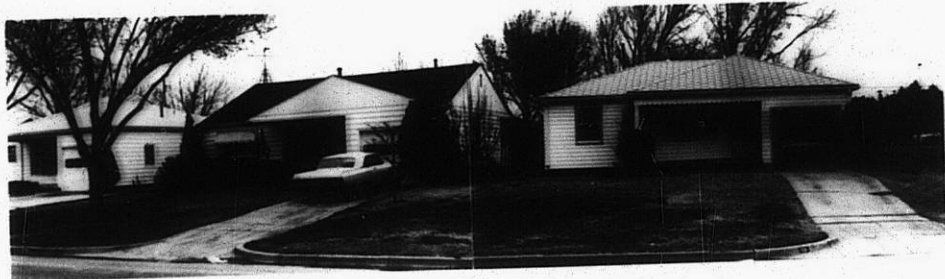
Z-1512



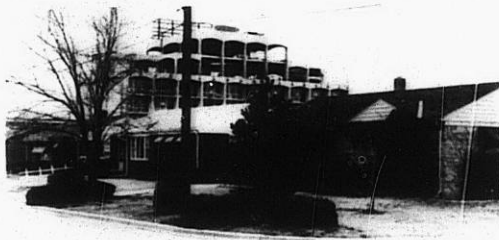
1.



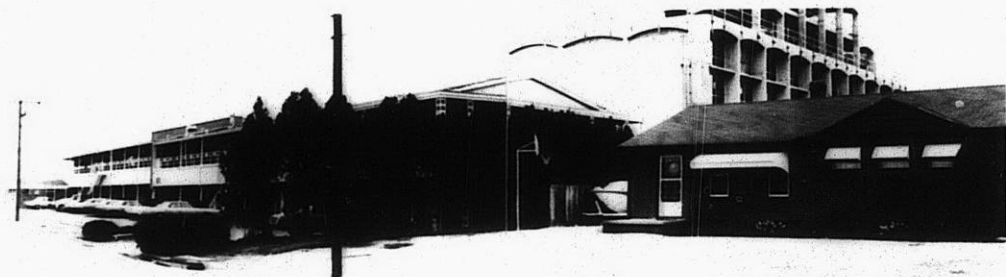
2.



3.



4.



5.

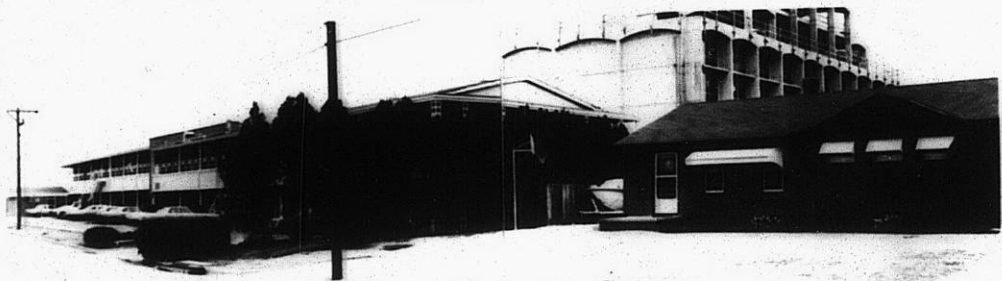


Z-1512 6.

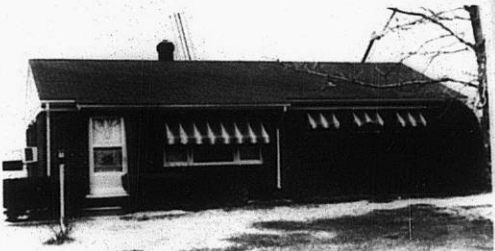
34X



3.

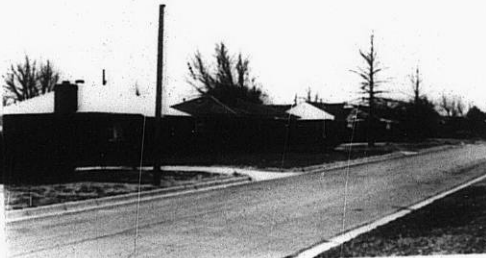
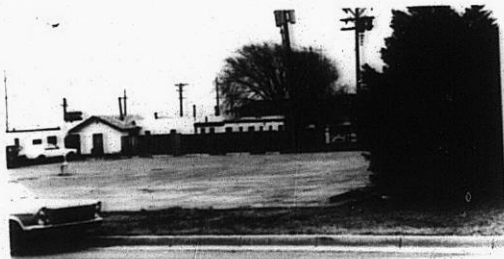


4.



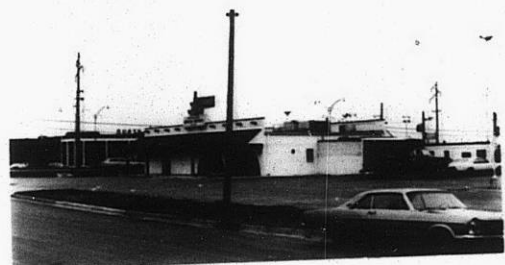
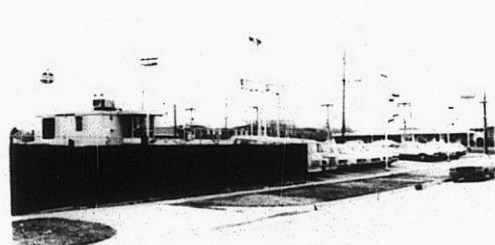
Z-1512 6.

5.



7.

8.



9.

10.

11.

319

34x