

NO. Z 1585 5846 "B" to "IC"

Desc. At the Northwest corner of Bleckley Drive and  
Harry

By Builders, Inc. by Oblinger-Smith Corp.

DOA	BODY	ACTION
<u>12-13-73</u>	<u>MAPC</u>	<u>Deferred 30 days</u>
<u>1-10-74</u>	<u>N-APC</u>	<u>Approved</u>
<u>1-29-74</u>	<u>BCC</u>	<u>approved</u>

Associated with DP-60

file discarded 2-9-82

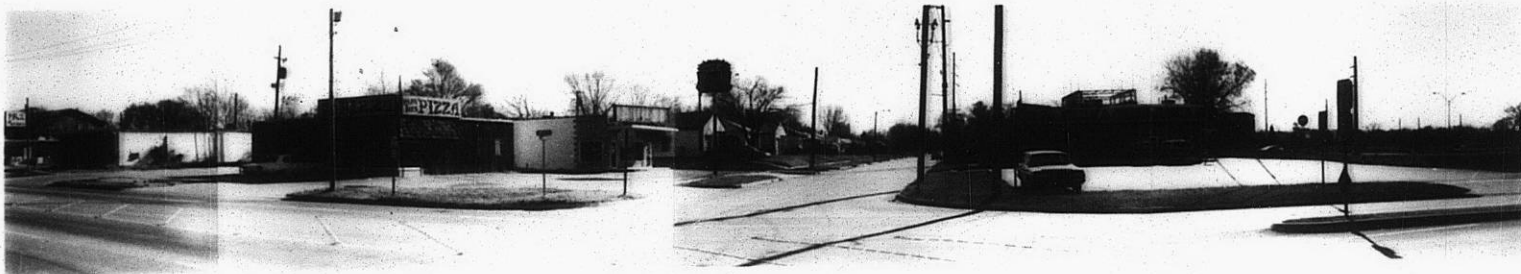
Resolution No. 33-491 Published 9-24-74 (T9-201)

Z-1585

314

XBE

Z-1585



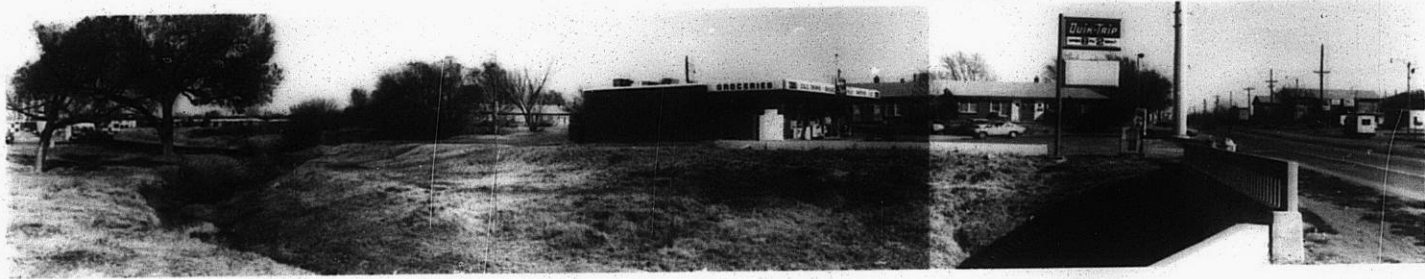
1



2.

Z-1585

3.



STE

XSTE

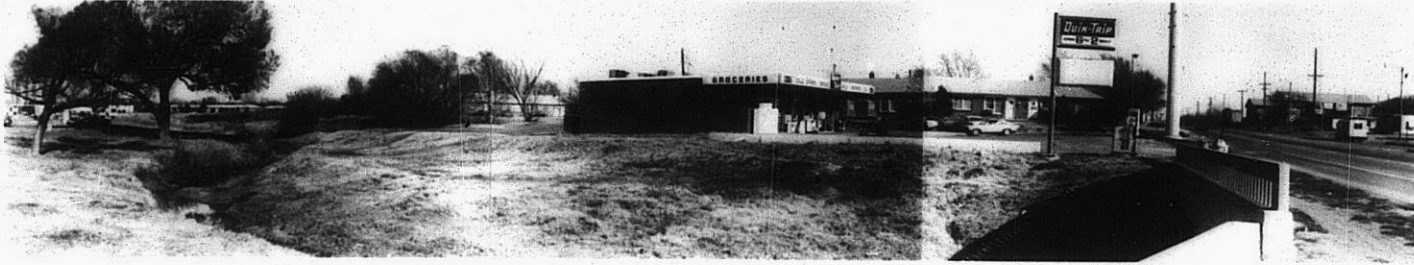
1



2.

Z-1585

3.



4.



5.



6.



Z-1585

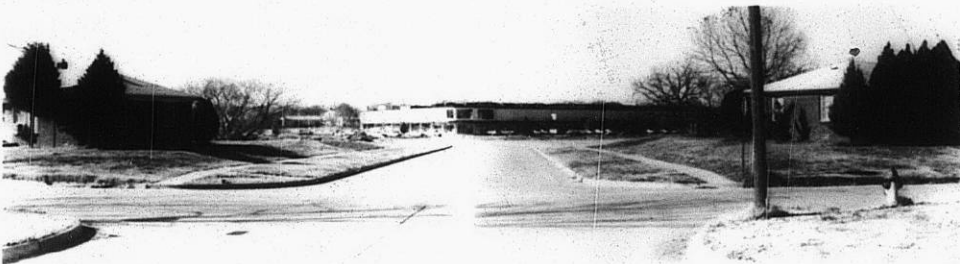
313

34X

5.

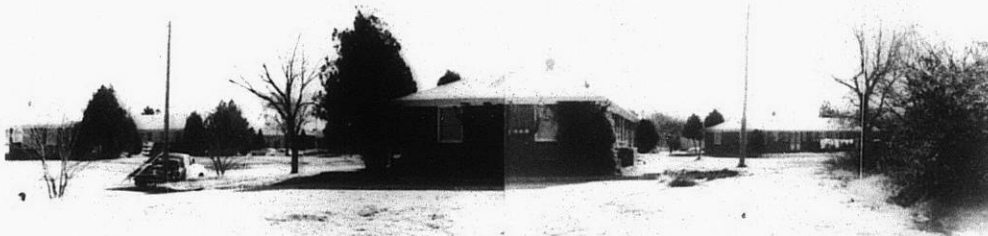


6.

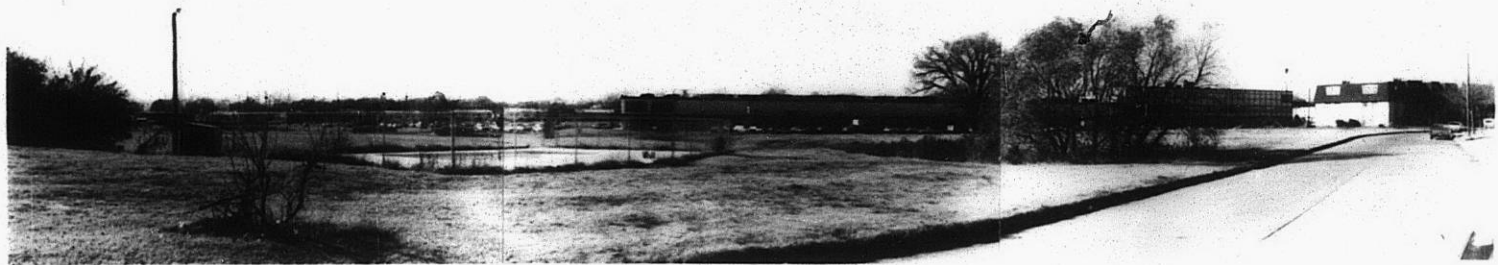


Z-1585

7.



8.



310

34x